



2019 ONCOLOGY ANNUAL REPORT



PARK NICOLLET FRAUENSHUH CANCER CENTER
REGIONS HOSPITAL CANCER CARE CENTER
HEALTHPARTNERS CANCER CARE CENTER - RIVERSIDE
PARK NICOLLET CLINIC & SPECIALTY CENTER - BURNSVILLE
PARK NICOLLET CLINIC & SPECIALTY CENTER - MAPLE GROVE
HUTCHINSON HEALTH CANCER CENTER
LAKEVIEW HOSPITAL CANCER CARE - STILLWATER



Park Nicollet Frauenshuh
Cancer Center &
HealthPartners Cancer
Care Centers



Randy Hurley, MD
Medical Director
HealthPartners and Regions Hospital
Cancer Care Centers
randy.w.hurley@healthpartners.com



Mark A. Wilkowske, MD
Medical Director
Park Nicollet Frauenshuh Cancer Center
mark.wilkowske@parknicollet.com



Laura Holasek
Administrative System Director
Oncology Services
HealthPartners and Park Nicollet
laura.holasek@parknicollet.com

Close to home: expert, personalized and timely care

At HealthPartners Cancer Care Centers and Park Nicollet Frauenshuh Cancer Center, we take pride in providing the highest quality, expert cancer care that's close to home. Staying near family, friends and routines can be vital when facing a cancer diagnosis. Our services are convenient with a network of care that includes over 30 highly skilled cancer care professionals in 14 locations across the metro area and beyond.

Finding timely, expert care that you can trust is a priority to newly diagnosed patients. We're the only metro program with a commitment to see patients within 48 hours of diagnosis. That's followed up with a care plan that's personalized to the patient's needs and specific type of cancer. We're proud of our reputation as regionally renowned experts in treating many cancers, including:

- Brain cancer
- Breast cancer
- Gastrointestinal cancers
- Genitourinary cancers
- Gynecologic cancers
- Kidney cancer
- Leukemia and lymphoma
- Lung cancer
- Melanoma
- Pancreatic cancer

Access to proven and newly emerging treatments can significantly impact a patient's treatment options. We offer a growing number of pre-clinical as well as phase 1, 2 and 3 clinical trials through our Oncology Research Center. We're also actively involved in a number of research trials and quality improvement projects. Our patients have access to the latest treatment options, greatly decreasing the need to travel to faraway institutes for additional care.

Our program continues to grow. We're expanding our clinical expertise with new clinicians who are building on our strengths of expert, personalized and timely care. Our commitment to providing the best care possible is demonstrated through our certification by the American College of Surgeons' Commission on Cancer and participation in the American Society of Clinical Oncology's Quality Oncology Practice Initiative (QOPI).

This annual report highlights our ongoing work in caring for patients diagnosed with cancer. Please contact us if you have questions about this report or the care we offer.



ASCO'S QOPI CERTIFICATION





Cancer care locations

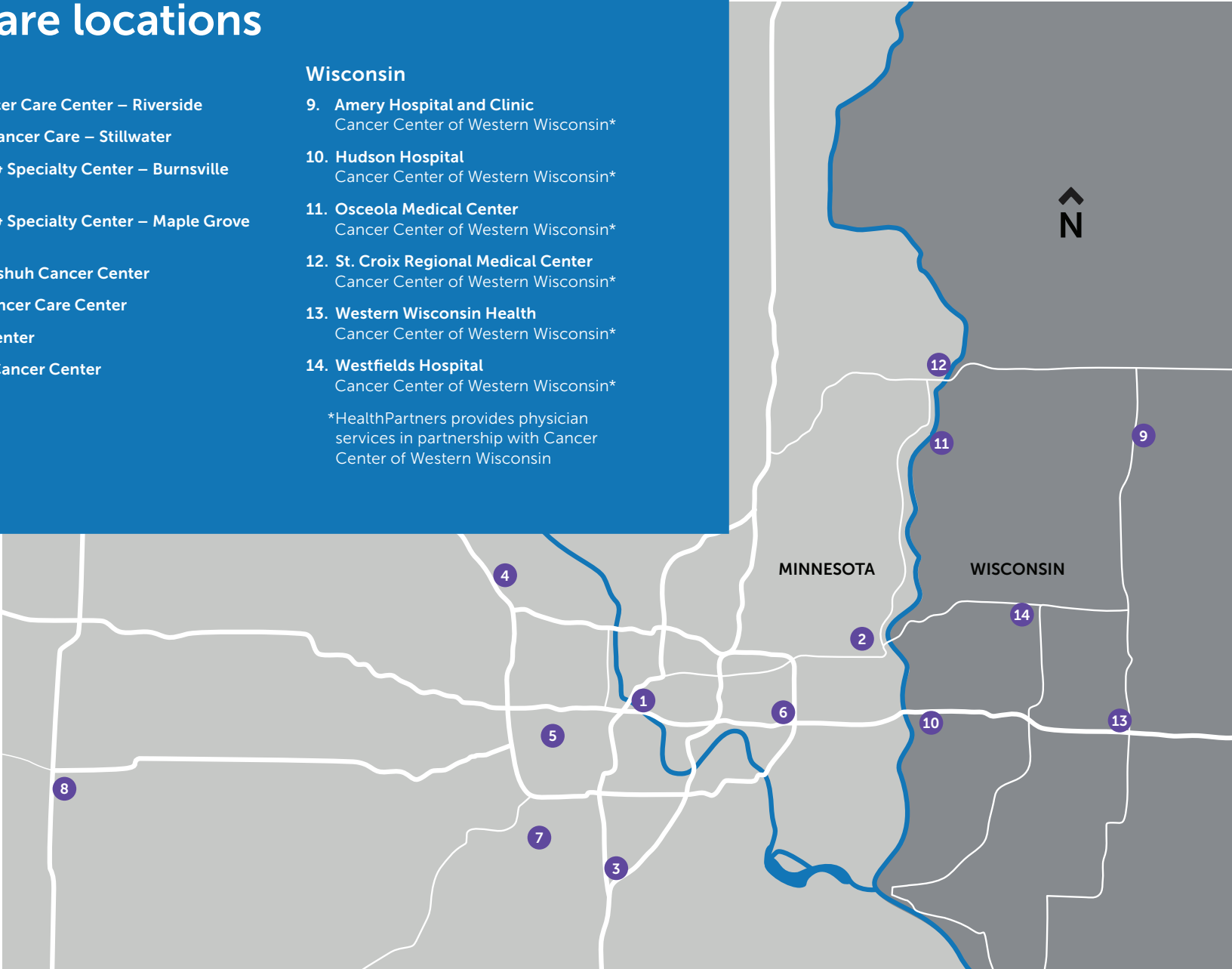
Minnesota

- 1. HealthPartners Cancer Care Center – Riverside
- 2. Lakeview Hospital Cancer Care – Stillwater
- 3. Park Nicollet Clinic & Specialty Center – Burnsville Infusion Center
- 4. Park Nicollet Clinic & Specialty Center – Maple Grove Infusion Center
- 5. Park Nicollet Frauenshuh Cancer Center
- 6. Regions Hospital Cancer Care Center
- 7. St. Francis Cancer Center
- 8. Hutchinson Health Cancer Center

Wisconsin

- 9. Amery Hospital and Clinic
Cancer Center of Western Wisconsin*
- 10. Hudson Hospital
Cancer Center of Western Wisconsin*
- 11. Osceola Medical Center
Cancer Center of Western Wisconsin*
- 12. St. Croix Regional Medical Center
Cancer Center of Western Wisconsin*
- 13. Western Wisconsin Health
Cancer Center of Western Wisconsin*
- 14. Westfields Hospital
Cancer Center of Western Wisconsin*

*HealthPartners provides physician services in partnership with Cancer Center of Western Wisconsin



Highlights of 2019

Accredited specialty pharmacy saves money and time for patients

HealthPartners Specialty Pharmacy is a collaboration with seven of our affiliated cancer centers. It was strategically developed to ensure that pharmacy care was convenient, high quality and affordable.

The team reviews each fill cycle to prevent unnecessary fills of extremely expensive medications. Since opening in 2017, over \$4 million dollars in savings has been achieved which prevents waste and improves affordability for our patients. In 2019, over \$700,000 in financial assistance was secured for our patients. Additionally, over 100 patients have enrolled in programs to receive free prescription drugs from the manufacturer.

In 2019, the pharmacy achieved Specialty Pharmacy accreditation through Accreditation Commission for Healthcare (ACHC) with a distinction in oncology. We currently are one of only 22 specialty pharmacies in Minnesota accredited by ACHC, and the only one with a distinction in oncology.

Expansion of neuro-oncology care

In 2019, we expanded our neuro-oncology program to Park Nicollet Frauenshuh Cancer Center to increase access in the west metro. In addition, HealthPartners Cancer Care Centers at Regions Hospital started a brain tumor support group to provide a safe environment for patients and family members to share feelings and concerns.



Ribbon cutting ceremony for the new Hutchinson Health Cancer Center

Hutchinson’s new cancer care center

In 2018, we welcomed Hutchinson Health, including their oncology program, to our organization. Our shared values of timely, personalized and high-quality cancer care made Hutchinson a strong addition to our regional network of care at HealthPartners.

That same year, the Hutchinson campus added an all-new cancer care center to accommodate the growing need for oncology services. The new space includes three exam rooms, six infusion rooms and a procedure room. A full spectrum of services are available to patients, including surgery, chemotherapy, radiation, hormonal therapy, biological therapy, nutrition services and support services. For more information, visit hutchhealth.com.

Newly created Cancer Research Center

This newly created center aligned and centralized oncology research from HealthPartners Cancer Care Centers and Park Nicollet Frauenshuh Cancer Center. The result is one team actively involved in a large number of research trials and projects, including continuing research on the effectiveness of medical cannabis in easing patient discomfort. Our work includes pre-clinical as well as phase 1, 2 and 3 clinical trials, which has allowed our patients access to emerging treatment options without having to travel to faraway institutes. To learn more, visit healthpartners.com/institute.

Celebrating 10 years at Frauenshuh Cancer Center

Park Nicollet Frauenshuh Cancer Center is proud to have celebrated 10 years of care that is centered on the patient. After several years of preparation and planning, the cancer center opened in 2009 with an updated, industry-leading approach to patient care that emphasized listening to, informing and involving patients in all aspects of their care. We continue our commitment to building a lasting legacy of innovative, compassionate care that will grow with our community's needs.

Tumor board added for melanoma

Melanoma Tumor Board was started to develop cohesive, internal guidelines for diagnosis, staging, treatment and follow-up of malignant melanoma. As a result, we've developed a program that provides patients with multidisciplinary care, access to new therapies, and clinical research. In 2020, we're opening a multidisciplinary melanoma clinic that will provide one-stop dermatology and oncology care for patients with skin cancers and skin toxicities related to cancer therapy.

2019 HPV vaccination champion

Park Nicollet physician, Andrea Singh, MD, was recognized by the Minnesota Department of Health (MDH) and won Minnesota's 2019 HPV Vaccine is Cancer Prevention champion award. Among her patients, aged 13 to 15 years, 60% have completed the HPV vaccination series. The statewide average for that age group is 42%.

Annual Creating HOPE Together Cancer Survivor Celebration

Survivorship events help those living with a history of cancer to connect with each other, celebrate milestones and recognize those who have supported them along the way. In July, Frauenshuh Cancer Center hosted its 6th annual Creating HOPE Together Cancer Survivor Celebration. The event drew over 300 guests and more than 40 volunteers. Guests enjoyed a courtyard event with white linens and colorful floral bouquets and an integrative therapy salon. Singer and songwriter Lynn O'Brien, an award-winning artist, performed a powerful collection of songs that inspired wholeness, hope and celebration. This event was made possible by generous donations to Park Nicollet Foundation.



New clinicians

- Lindsay Albert, NP, AGPC
- Annie Barlow, MPAS, PA-C
- Kathryn Baxstrom, MD
- Michael Blazar, MD
- Dave Drone, PharmD
- Sarah Jax, NP-AGPC
- Kelly Young, DNP-F

Awards and achievements

Outstanding patient experience award

The Press Ganey Guardian of Excellence Award for outstanding patient experience was awarded to the staff at Hutchinson Cancer Center. This award recognizes organizations who have reached the 95th percentile in patient experience and maintained that level for an entire year. The center also won the award in 2016.

Nurse navigator writes chapter in book

Women's Health: A Primary Care Clinical Guide is a reference guide for students and primary care clinicians. Linda Christinsen-Rengel, NP, Nurse Navigator at Regions Hospital, wrote a chapter in this new book on women's health.

Grateful Patient is a program at Regions Hospital that allows patients and family members to recognize and thank staff who made a difference in their lives. Several members of the oncology team were recipients.

- Dan Anderson, MD, MPH
- Kevin Collis, RN, OCN
- Kurt Demel, MD
- Arakdiusz Dudek, MD, PhD
- Peter Hurley, MD
- Randy Hurley, MD
- Bal Jahagirdar, MD
- Julie Kargbo
- Steven McCormack, MD
- Cindy Olive, RN
- Richard Peterson, MD
- Regions Hospital Infusion team
- Denise Shannon, LICSW



FRONT ROW (L to R): Mike Haag, Jamie Clark, Caitlin Anderson, Anne Hopkins, James Bychinski
MIDDLE ROW (L to R): Shabnam Jivanjee, Kara O'Grady, Mollie Troup
BACK ROW (L to R): James Riehl, Alyssa Nielsen, Holly Guida

Specialty Pharmacy: President's Award Winners

Each year, HealthPartners recognizes our colleagues who go above and beyond for our patients, members, communities and each other. The President's Award Winners are nominated by their colleagues and are selected based on input from leaders, peers and internal customers

throughout the organization. HealthPartners Specialty Pharmacy was the 2019 President's Award's Team Winners. Congratulations to Holly Guida, RN-BSN, MBA and Anne Hopkins, RN, OCN for their work to promote the appropriate use of high quality and cost-effective pharmaceuticals.

Leadership in professional organizations

Minnesota Society of Clinical Oncology

We continue to provide leadership and support to the Minnesota Society of Clinical Oncology. This group works to provide advocacy for patients with cancer and promote standards of excellence for high-quality cancer care.

Treasurer: **Priya Kumar, MBBS, MS**

Chair, Education Programs:

Balkrishna Jahagirdar, MD

Board Member: **Yan Ji, MD**

Member-at-Large: **Melissa M. Sherman, MD**

Metro MN Oncology Nursing Society

We're proud to have several colleagues in leadership roles in an organization dedicated to promoting their profession, colleagues and patients.

Secretary: **Mary Ehresman, FNP, ADCN**

Treasurer: **Cindy Jacobson, RN, ONC**

Director-at-Large: **Cindy Graham, RN, ONC**

Director-at-Large: **Mary Holland, BSN, OCN**

Alliance for Clinical Trials in Oncology

This group develops and conducts clinical trials, as well as researches methods to alleviate side effects of cancer and cancer treatments.

Principal Investigator, Board Member and Co-Chair, Community Oncology Committee, Trustee of Alliance Foundation:

Dan Anderson, MD, MPH

Co-Chair, Experimental Therapeutics Committee:

Balkrishna Jahagirdar, MD

Neuro-Oncology Committee:

Richard Peterson, MD

Respiratory Committee: **Arkadiusz Dudek, MD**

Respiratory Committee, Community Oncology Committee and Young Investor Traveling Award recipient: **Jan Yi, MD**

Community Oncology Committee and Symptom Intervention Committee: **Dylan Zylla, MD, MS**

American Society of Clinical Oncology

This group is dedicated to conquering cancer through research, education and promotion of the highest quality patient care.

Track leader for 2020 annual meeting, grassroots advocacy group: **Kurt Demel, MD**

Chinese American Hematologist and Oncologists Network

Bridging cancer care, education and research between China and the United States.

Lifetime Member: **Yan Ji, MD**

Hoosier Cancer Research Network

An independent, nonprofit contract research organization (CRO) that specializes in early phase, multi-center, investigator-initiated oncology clinical trials.

Thoracic working group, genitourinary cancer working group, skin cancer working group:

Arkadiusz Dudek, MD, PhD

Cancer Legal Care

A non-profit that engages the law to resolve complex challenges facing people and communities affected by cancer.

Board Member: **Amy Spomer, MD**

Midwest Melanoma Partnership

A multi-institutional collaboration dedicated to the development of improved therapies for patients with malignant melanoma.

Chair, Board of Directors:

Arkadiusz Dudek, MD, PhD

Minnesota Community Measurement

This initiative collects and publishes measures of health care quality and cost for Minnesota clinics, medical groups and hospitals.

Cancer Measure Development Workgroup:

Dylan Zylla, MD, PhD

Inpatient satisfaction ratings exceed goals

Our inpatient oncology patients are invited to rate their experience through Rate Your Hospital. Regions Hospital and Methodist Hospital exceeded their goals and were recognized for providing care within the top 10% of participating hospitals.

Methodist Hospital

82.1%

overall patient satisfaction, exceeding their goal of 78.5%

Regions Hospital

83.6%

overall patient satisfaction, exceeding their goal of 79.5%



Community awareness and support

HealthPartners and Park Nicollet oncology programs are actively involved in programs to increase cancer screenings, community awareness and support for patients with cancer.

A Breath of Hope Lung Foundation

This organization fights lung cancer by funding innovative research, raising awareness and supporting patients and families. We partnered with them at a number of events in 2019:

- **Annual Walk/Run** – Sponsored this event, including staffing an information booth, in Minneapolis, in August 2019.
- **City Wide Task Force – Arkadiusz Dudek, MD**, participated in a task force to increase the number of Minnesotans screened for lung cancer.
- **Board Member – Yan Ji, MD**, is a current board member of the foundation.

HPV Education Event

Fruenshuh Cancer Center and the American Cancer Society held an HPV public education event at Park Nicollet Clinic – Plymouth in August 2019.

Lung Cancer Support Group Continues to Thrive

This monthly group at Regions Hospital provides an opportunity for patients with lung cancer to connect. There's a sense of empowerment and belonging when meeting others with a similar cancer diagnosis.

Brain Cancer Support Group

In the last year, we started a brain tumor support group where patients and families can share their feelings and concerns. The group strives to provide a sense of belonging, safety and courage to those affected by a brain tumor. For more information, call **651-254-9267**.

Rein in Sarcoma Party in the Park

HealthPartners and Park Nicollet were sponsors of this celebration of sarcoma patients, survivors and their loved ones in July 2019.

Subaru Loves to Care

Subaru partnered with The Leukemia and Lymphoma Society to spread hope, love and warmth to patients with cancer by delivering blankets, arts and crafts kits and messages of hope written by customers. In July, patients at Frauenshuh Cancer Center were recipients of these heartfelt gifts.



Education and research

Critical to our mission of helping patients with cancer is our engagement in education and research. Teaching and education ensure our clinicians and staff keep pace with new discoveries in the diagnosis and treatment of cancer. Research, through participation in clinical trials, gives our patients access to new therapies. We're also taking a leading role in local research by developing an Early Phase Therapeutics Program (EPTP) at Regions Hospital. We offer a variety of clinical trials at all of our facilities.

The Metro-Minnesota Community Oncology Research Consortium (mmcorc.org) is a nonprofit research consortium of 25 local hospitals and clinics, which provides people in our community access to the newest therapies available for cancer treatment and prevention through national cancer clinical trials. HealthPartners and Park Nicollet are active partners within the research consortium, which is administered by HealthPartners Institute. Physicians Dan Anderson, MD, MPH, and Richard Peterson, MD, provide consortium leadership as the principal investigator and assistant principal investigator.

For more information on our Cancer Research Center, visit healthpartners.com/institute.

Select trials

AB928CSP002: A Phase I/Ib Study to Evaluate the Safety and Tolerability of Immunotherapy Combinations in Participants with Breast and Gynecologic Malignancies

ACT FAST 2018-07: Blood and Stool Sample Collection in Subjects with a Diagnosis of Colorectal Cancer or Colorectal Lesion

ADU-CL-20: A Phase 2 Efficacy and Safety Trial of ADU-S100 and Pembrolizumab in Adults with Head and Neck Cancer

ARRAY 382-201: A Phase 1b/2 Study of ARRY-382 in Combination with Pembrolizumab, a Programmed Cell Death Receptor 1 (PD-1) Antibody, for the Treatment of Patients with Advanced Solid Tumors

ARRAY 818-103: A Sequential 2-arm, Open-label Phase 1 Study to Evaluate the Effects of Encorafenib in Combination with Binimetinib on the Pharmacokinetics of Losartan, Midazolam, Caffeine, Omeprazole, and Dextromethorphan Administered in a Cocktail Approach and on the Pharmacokinetics of Rosuvastatin in Patients with BRAF V600-Mutant Unresectable or Metastatic Advanced Solid Tumors

CANCAN TRIAL: A Randomized Trial of Medical Cannabis in Patients with Advanced Cancers to Assess Impact on Opioid Use and Cancer-Related Symptoms: A Pilot and Feasibility Study

Connect MDS and AML: The Myelodysplastic Syndromes (MDS) and Acute Myeloid Leukemia (AML) Disease Registry

Exact Sciences 2018-01: Blood Sample Collection to Evaluate Biomarkers in Subjects with Untreated Solid Tumors

HCRN GU15-215: A Phase II Trial of Atezolizumab and Bevacizumab in Cisplatin-Ineligible Subjects with Advanced/Unresectable Urothelial Cancer

LUN 15-299: Phase II Study of Nivolumab and Ramucirumab for Patients with Previously-Treated Mesothelioma

MC17C1: Double-Blinded, Placebo-Controlled Trial to Explore the Anti-Androgen, Ketoconazole, for Treating Patients with an Oncology with an Ongoing EGFR Inhibitor Induced Rash

MERCK MK3475-564: A Phase III, Randomized, Double-Blind, Placebo-Controlled Clinical Trial of Pembrolizumab (MK 3475) as Monotherapy in the Adjuvant Treatment of Renal Cell Carcinoma Post Nephrectomy (KEYNOTE-564)

MK-7902-001 LEAP: A Phase 3 Randomized, Double-Blind Trial of Pembrolizumab with or without Lenvatinib in Participants with Treatment-Naive, Metastatic Non-Small Cell Lung Cancer whose Tumors have a Tumor Proportion Score (TPS) Greater than or Equal to 1%

MRT516-005: A Randomized Phase 3 Study of Sitravatinib in Combination with Nivolumab Versus Docetaxel in Patients with Advanced Non-Squamous Non-Small Cell Lung Cancer with Disease Progression On or After Platinum-Based Chemotherapy in Combination with Checkpoint Inhibitor Therapy

NATALEE CLEE011012301C: A Phase III, Multicenter, Randomized, Open-label Trial to Evaluate Efficacy and Safety of Ribociclib with Endocrine Therapy as an Adjuvant Treatment in Patients with Hormone Receptor-Positive, HER2-Negative, Early Breast Cancer

Nektar PIVOT 2: A Phase 1/2, Open-label, Multicenter Study of the Combination of NKTR-214 and Nivolumab or the Combination of NKTR-214, Nivolumab, and Other Anti-Cancer Therapies in Patients with Select Locally Advanced or Metastatic Solid Tumor Malignancies

NEKTAR PROPEL 16-214-05: A Phase 1b Open-Label, Multicenter Study to Investigate the Safety and Preliminary Efficacy of NKTR-214 in Combo with Anti-PD1 (Pembro) or Anti-PDL1 (Atezolizumab) in Patients with Locally Advanced or Metastatic Solid Tumors

Neulasta Onpro: Observational Study to Estimate the Incidence of Febrile Neutropenia (FN) Among Subjects with Non-Myeloid Malignancies at High Risk for FN and Receiving Neulasta® (pegfilgrastim) Onpro® Kit or Other Physician Choice Options for Prophylaxis of FN

PSB205-001: A Phase 1, Open-Label, Dose Escalation and Expansion Study to Evaluate the Safety, Tolerability, Pharmacokinetics, and Preliminary Anti-tumor Activity of PSB205 in Patients with Relapsed/Refractory Solid Tumors

SGNTV-001: Open Label Phase 2 Study of Tisotumab Vedotin for Locally Advanced or Metastatic Disease in Solid Tumors

SPOTLIGHT 8951-CL-0301: A Phase 3, Global, Multi-Center, Double-Blind, Randomized, Efficacy Study of Zolbetuximab (IMAB362) Plus mFOLFOX6 Compared with Placebo Plus mFOLFOX6 as First-line Treatment of Subjects with Claudin (CLDN)18.2-Positive, HER2-Negative, Locally Advanced Unresectable or Metastatic Gastric or Gastroesophageal Junction (GEJ) Adenocarcinoma

STELLAR-001: A Phase I Study of the Anti-C5aR, IPH5401, in Combination with the Anti-PD-L1, Durvalumab, in Patients with Selected Advanced Solid Tumors (HCC)

STM-03: Phase 1 Study of Pro-caspase Activating Compound-2 (PAC-1) in the Treatment of Advanced Malignancies

TAK981-1002: An Open Label, Dose-Escalation, Phase 1 Study to Evaluate the Safety, Tolerability, and Pharmacokinetics, of TAK-981 in Adult Patients with Metastatic Solid Tumors or Lymphomas

TPX-0005-01: A Phase 1/2 Open Label, Multi-Center, First-in-Human Study of the Safety, Tolerability, Pharmacokinetics, and Anti-Tumor Activity of TPX-0005 in Patients with Advanced Solid Tumors Harboring ALK, ROS1, or NTRK1-3 Rearrangements

Select publications

Galanis E, Anderson SK, Twohy EL, Carrero XW, Dixon JG, Tran DD, Jeyapalan SA, **Anderson DM**, Kaufmann TJ, Feathers RW, Giannini C, Buckner JC, Anastasiadis PZ, Schiff D. A phase 1 and randomized, placebo-controlled phase 2 trial of bevacizumab plus dasatinib in patients with recurrent glioblastoma: Alliance/North Central Cancer Treatment Group N0872.

Lonial S, Jacobus S, Fonseca R, Weiss M, Kumar S, Orłowski RZ, Kaufman JL, Yacoub AM, Buadi FK, O'Brien T, Matous JV, **Anderson DM**, Emmons RV, Mahindra A, Wagner LI, Dhodapkar MV, Rajkumar SV. Randomized Trial of Lenalidomide Versus Observation in Smoldering Multiple Myeloma, Dhodapkar MV, Rajkumar SV. *Journal of Clinical Oncology*.

Shah HA, Fischer JH, Venepalli NK, Danciu OC, Christian S, Russell MJ, Liu LC, Zacny JP, **Dudek AZ**. Phase I Study of Aurora A Kinase Inhibitor Alisertib (MLN8237) in Combination With Selective VEGFR Inhibitor Pazopanib for Therapy of Advanced Solid Tumors. *American Journal of Clinical Oncology*.

Venepalli NK, Emmadi R, Danciu OC, Chowdhery R, Cabay RJ, Gaitonde S, Aardsma N, Kothari R, Liu LC, Fischer JH, Zaidi A, Russell MJ, **Dudek AZ**. Phase I Study of IGF-Methotrexate Conjugate in the Treatment of Advanced Tumors Expressing IGF-1R. *American Journal of Clinical Oncology*.

Halfdanarson TR, Foster NR, Kim GP, Meyers JP, Smyrk TC, McCullough AE, Ames MM, **Jaffe JP**, Alberts SR. A Phase II Randomized Trial of Panitumumab, Erlotinib, and Gemcitabine versus Erlotinib and Gemcitabine in Patients with Untreated, Metastatic Pancreatic Adenocarcinoma: North Central Cancer Treatment Group Trial N064B (Alliance). *The Oncologist*.

Patel MR, Dash A, Jacobson BA, **Ji Y**, Baumann D, Ismail K, Kratzke RA. JAK/STAT inhibition with ruxolitinib enhances oncolytic virotherapy in non-small cell lung cancer models. *Cancer Gene Therapy*.

Burnett-Hartman AN, Udaltsova N, Kushi LH, Neslund-Dudas C, Rahm AK, **Pawloski PA**, Corley DA, Knerr S, Feigelson HS, Hunter JE, Tabano DC, Epstein MM, Honda SA, Ter-Minassian M, Lynch JA, Lu CY. Clinical Molecular Marker Testing Data Capture to Promote Precision Medicine Research within the Cancer Research Network. *JCO Clinical Cancer Informatics*.

Raman SR, Brown JS, Curtis LH, Haynes K, Marshall J, **Pawloski PA**, Platt R. Cancer Screening Results and Follow-up Using Routinely Collected Electronic Health Data: Estimates for Breast, Colon, and Cervical Cancer Screenings [editorial]. *Journal of General Internal Medicine*.

Banegas MP, Rivera DR, O'Keeffe-Rosetti MC, Carroll NM, **Pawloski PA**, Tabano DC, Epstein MM, Yeung K, Hornbrook MC, Lu C, Ritzwoller DP. Long-Term Patterns of Oral Anticancer Agent Adoption, Duration, and Switching in Patients with CML. *Journal of the National Comprehensive Cancer Network*.

Kent DJ, McMahl-Walraven CN, Panozzo CA, **Pawloski PA**, Haynes K, Marshall J, Brown J, Eichelberger B, Lockhart CM. Descriptive Analysis of Long- and Intermediate-Acting Insulin and Key Safety Outcomes in Adults with Type 2 Diabetes Mellitus. *Journal of Managed Care and Specialty Pharmacy*.

McMahl-Walraven CN, Kent DJ, Panozzo CA, **Pawloski PA**, Haynes K, Marshall J, Brown J, Eichelberger B, Lockhart CM. Harnessing the Biologics and Biosimilars Collective Intelligence Consortium to Evaluate Patterns of Care. *Journal of Managed Care and Specialty Pharmacy*.

Burnett-Hartman AN, Powers JD, Chubak J, Corley DA, Ghai NR, McMullen CK, **Pawloski PA**, Sterrett AT, Feigelson HS. Treatment patterns and survival differ between early-onset and late-onset colorectal cancer patients: the patient outcomes to advance learning network. *Cancer Causes Control*.

Rahm AK, Ladd I, Burnett-Hartman AN, Epstein MM, Lowery JT, Lu CY, **Pawloski PA**, Sharaf RN, Liang SY, Hunter JE. The Healthcare Systems Research Network (HCSRN) as an Environment for Dissemination and Implementation Research: A Case Study of Developing a Multi-Site Research Study in Precision Medicine. eGems: *The Journal for Electronic Health Data and Methods*.

Clarke CL, Kushi LH, Chubak J, **Pawloski PA**, Bulkley JE, Epstein MM, Burnett-Hartman AN, Powell B, Pearce CL, Spencer Feigelson H. Predictors of Long-Term Survival among High-Grade Serous Ovarian Cancer Patients. *Cancer Epidemiology, Biomarkers & Prevention*.

Pawloski PA, Brooks GA, Nielsen ME, Olson-Bullis BA. A Systematic Review of Clinical Decision Support Systems for Clinical Oncology Practice. *Journal of the National Comprehensive Cancer Network*.

Rhee TG, **Pawloski PA**, Parsons HM. Psychooncology. Health-related quality of life among US adults with cancer: Potential roles of complementary and alternative medicine for health promotion and well-being. *Psycho-Oncology*.

McMullen C, Bulkley J, Corley DA, Madrid S, Davis AQ, Hesselbrock R, Kurtilla F, Anderson CK, Arterburn D, Somkin CP, **Pawloski PA**, Ghai NR, Feigelson HS. Health Care Improvement and Survivorship Priorities of Colorectal Cancer Survivors: Findings from the PORTAL Colorectal Cancer Cohort Survey. *Supportive Care in Cancer*.

Zylla DM, Gilmore GE, Steele GL, Eklund JP, Wood CM, Stover AM, Shapiro AC. Collection of electronic patient-reported symptoms in patients with advanced cancer using Epic MyChart surveys. *Support Care Cancer*.

Anderson SP, **Zylla DM**, McGriff DM, Arneson TJ. Impact of Medical Cannabis on Patient-Reported Symptoms for Patients With Cancer Enrolled in Minnesota's Medical Cannabis Program. *Journal of Oncology Practice*.

Zylla D, Gilmore G, Eklund J, Richter S, Carlson A. Impact of diabetes and hyperglycemia on health care utilization, infection risk, and survival in patients with cancer receiving glucocorticoids with chemotherapy. *Journal of Diabetes and its Complications*.

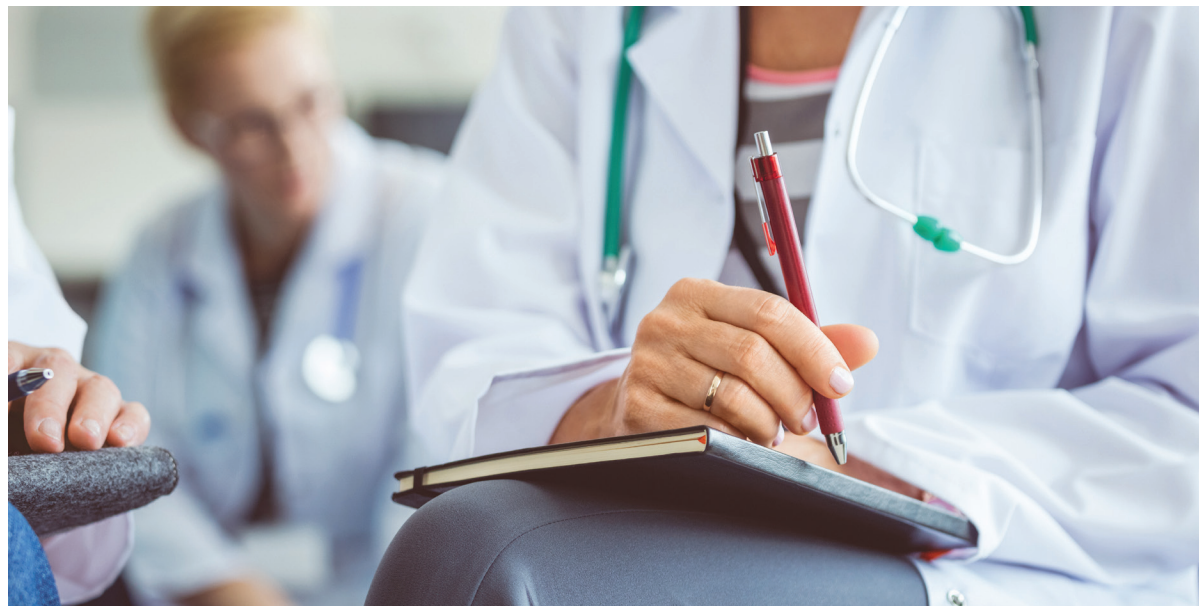
Steele G, Arneson T, **Zylla D**. A Comprehensive Review of Cannabis in Patients with Cancer: Availability in the USA, General Efficacy, and Safety. *Current Oncology Reports*.

Palliative care for lung cancer

Early intervention palliative care was introduced for those patients who were newly diagnosed with stage IV lung cancer. Several studies indicated that palliative care increased the length and quality of life with and without directed therapy for these patients. Our multidisciplinary case review process included input from medical oncology, thoracic surgery, pulmonary medicine, interventional radiology and radiation oncology to ensure patients receive expert guidance and care along their journey. Our lung cancer support group continues to thrive and is a great resource for our patients and their families.

Training the next generation of oncologists

One of the core missions of our organization is to train the next generation of physicians and scientists to be leaders in the field of oncology. Regions Hospital is proud to host a clinical training site for the University of Minnesota Hematology and Oncology Fellowship Program. For more than 25 years, this training has included direct supervision of patient care, didactic lectures and informational teaching sessions. Each year, more than 50 hours of didactic lectures are provided to University of Minnesota medical students, internal medicine residents, hematology-oncology fellows, primary care and emergency room physicians, oncology nurses and pharmacists.



Oncology symposiums offer continuing education

In collaboration with the staff at the Cancer Center of Western Wisconsin, Park Nicollet Frauenshuh Cancer Center and HealthPartners Cancer Care Centers, we provide oncology education symposiums for health care clinicians twice a year.

The spring 2019 symposium on managing side effects of cancer care included:

- Uncommon Chemotherapy Toxicities by **Randy Hurley, MD**
- Update on MMCORC Symptom Management Trails by **Dan Anderson, MD, MPH**
- Cardio Toxicity of Chemotherapy Drugs by **Sunny Kaul, MD**
- Managing Toxicities of Immune Therapy by **Kate Baxstrom, MD**
- Side Effect Management of Endocrine Therapy by **Peter Hurley, MD**
- Role of Medical Cannabis in Symptom Management by **Dylan Zylla, MD, MS**

The fall 2019 symposium on molecular characterization of cancer included:

- Molecular Characterization of Breast Cancer by **Priya Kumar, MD**
- Molecular Characterization of Melanoma by **Arek Dudek, MD**
- Molecular Characterization of Non-Small Cell Lung Cancer by **Bal Jahagirdar, MD**
- Molecular Characterization of GI Cancers by **Yan Ji, MD**
- Molecular Characterization of Acute Leukemia by **Steve McCormack, MD**
- Next Generation Sequencing & Liquid Biopsies by **Randy Hurley, MD**



Improving care for all patients with cancer

Our staff participates in a number of conferences and training seminars each year to help improve the care of patients with cancer.

Park Nicollet New & Old Drugs: Best Choices, May 9, 2019

Cannabis for Curious Clinicians by **Dylan Zylla, MD, MS**

American Society of Clinical Oncology (ASCO) Annual Meeting, June 1, 2019

Lung Cancer – Non-Small Cell Local-Regional/Small Cell/Other Thoracic Cancers by **Steven McCormack, MD**

International Cannabinoid Research Society, July 1, 2019

Presentation by **Dylan Zylla, MD, MS**

American Society of Clinical Oncology, Oct. 24, 2019

Supportive Care in Oncology Symposium presentation by **Dylan Zylla, MD, MS**

Young President's Organization, Minnesota, Nov. 7, 2019

Guest speaker – **Dylan Zylla, MD, MS**

HealthPartners Primary Care Conference, Nov. 21, 2019

Cancer Survivor Updates by **Amy Spomer, MD**

Leukemia and Lymphoma Society 2019

Speakers Bureau volunteer – **Kurt Demel, MD**

Screening and prevention

Be Pink and breast cancer awareness

A second Mammo-a-go-go was added to our fleet in 2019. Mammo-a-go-go is a mobile mammography unit that visits local communities and events to make getting a mammogram easy. It's part of our continued Be Pink campaign to encourage women in the Twin Cities to be aware, proactive and empowered with their breast health, including screenings and early breast cancer detection.

HealthPartners, Regions Hospital and Park Nicollet Jane Brattain Breast Center participated again this year in the Susan G. Komen Race for the Cure on Mother's Day 2019. Using our Mammo-a-go-go as a backdrop for our booth space, we had notable event engagement, including people rushing over for our annual charm giveaway.

To kick off breast cancer awareness month in October, we presented Country for a Cause and the Be Pink fundraising breakfast in partnership with the Park Nicollet Foundation. These events benefit Jane Brattain Breast Center community outreach fund providing no-fee mammograms, diagnostics services and education to women in need.

Colorectal cancer screening

As part of Colorectal Cancer Screening Awareness month, a social media campaign and monitor screens in our clinics reminded people to schedule a colorectal screenings. To reach even more patients throughout the year, we mailed FIT tests to those who hadn't been screened in our primary care clinics. FIT tests are an in-home stool sample kit that can be used as a preliminary screening for those who meet certain qualifications.

In September, we sponsored and participated in Get Your Rear in Gear and Tour de Tush for colon cancer in Minneapolis. Approximately 2,500 runners, walkers and bikers joined together to raise awareness and funds for colon cancer education, awareness and screenings.

We continued our partnership with Sage, Minnesota's cancer screening program for low-income residents, to screen more than 70 patients in 2019.

Lung cancer screening in our community

We've partnered with A Breath of Hope's screening task force to increase the number of Minnesotans screened for lung cancer. This workgroup includes representatives from all of the Twin Cities health systems to increase the reach and effectiveness of this effort.

Annual skin cancer screening event

Our combined oncology program, in conjunction with our dermatology departments, hosted a free skin cancer screening event for the community on May 4, 2019. There were 83 patients seen. Nearly 50% were first-time event attendees. Follow-up was recommended for 35% of participants.

Community well-being initiatives

According to the American Cancer Society, certain cancer deaths can be prevented by living healthier lifestyles and "making healthy choices like not smoking, staying at a healthy weight, eating right, keeping active and getting recommended screening tests." HealthPartners promotes health and well-being in our communities through a variety of projects and initiatives designed to increase activity, encourage better food and beverage choices and reduce the number of people who use tobacco or vape.

Accountability measures

These accountability measures indicate the portion of breast and colorectal cancer patients treated according to recognized standards of care by diagnosis year. The results are reported to the National Cancer Data Base (NCDB), a joint program of American College of Surgeons (ACoS) and American Cancer Society. NCDB is a nationwide oncology outcomes database for more than 1,500 commission-accredited cancer programs.

NCDB Select Breast and Colorectal Measures

		ESTIMATED PERFORMANCE RATES			NATIONAL BENCHMARK*	
		2015	2016	2017***		
Breast Cancer						
	Radiation therapy is administered within one year (365 days) of diagnosis for women under age 70 receiving breast-conserving surgery for breast cancer.	HEALTHPARTNERS	93.5%	96.8%	98.94%	90%
		PARK NICOLLET	98.5%	96.8%	97.6%	
Combination chemotherapy is considered or administered within four months (120 days) of diagnosis for women under 70 with AJCC T1c N0 M0, or Stage II or III ER and PR negative breast cancer.	HEALTHPARTNERS	100%	100%	100%	90%**	
	PARK NICOLLET	94.1%	85.7%	100%		
Tamoxifen or third generation aromatase inhibitor is considered or administered within one year (365 days) of diagnosis for women with AJCC T1c N0 M0, or Stage II or III ER and/or PR positive breast cancer.	HEALTHPARTNERS	96%	98.1%	97.35%	90%	
	PARK NICOLLET	96.6%	100%	98%		
Colon Cancer						
	Adjuvant chemotherapy is considered or administered within four months (120 days) of diagnosis for patients under the age of 80 with AJCC T1c Stage III (lymph node positive) colon cancer.	HEALTHPARTNERS	83.3%	100%	100%	90%**
		PARK NICOLLET	100%	100%	100%	
At least 12 regional lymph nodes are removed and pathologically examined for resected colon cancer.	HEALTHPARTNERS	90.6%	98.2%	94.59%	85%	
	PARK NICOLLET	89.1%	92.27%	92.19%		

*Commission-approved programs

**Noted as 2013 benchmark from NCDB

***2017 Data based on registry database not NCDB

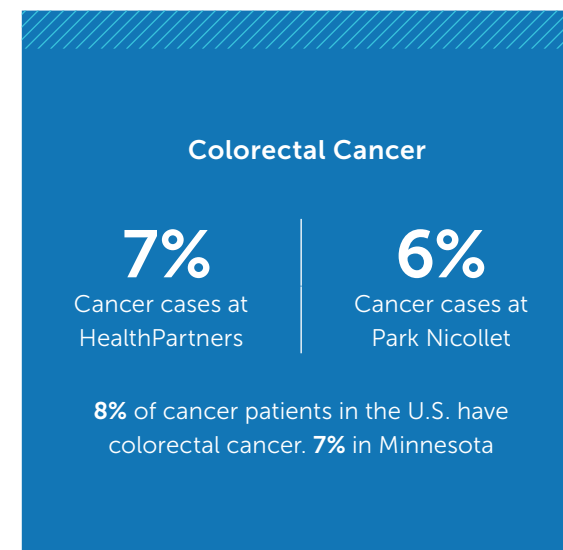
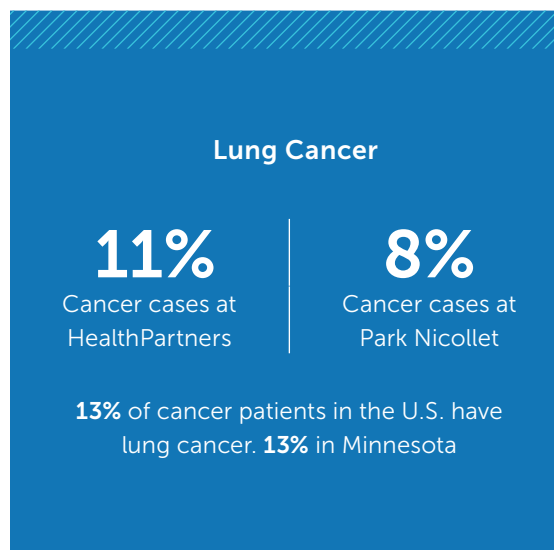
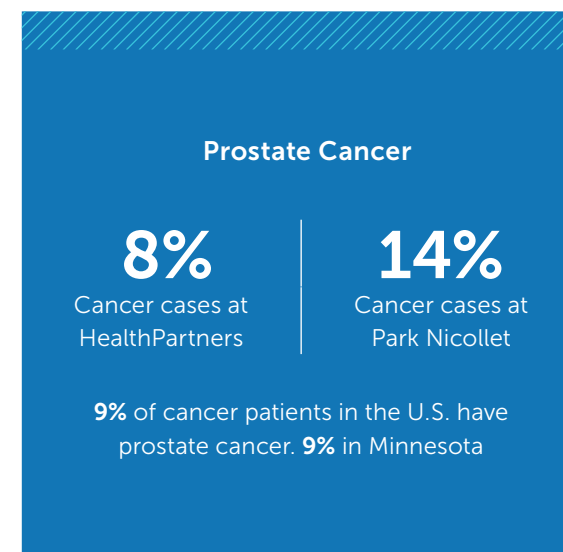
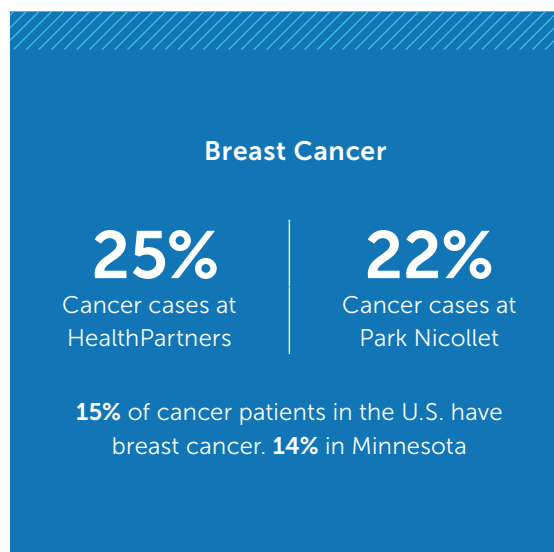
Oncology registry

Most common cancer sites

The four most common cancers for HealthPartners and Park Nicollet patients in 2018 (excluding skin cancers) were breast, prostate, lung and colorectal. These four sites account for 46 percent and 50 percent of all cases.

TABLE 1:
2018 Four Most Common Cancer Sites

Table 1 compares, by site and percentage, HealthPartners and Park Nicollet case totals with estimated number of cancer cases in Minnesota and the U.S.



**TABLE 2:
2018 Tumor Registry**

HealthPartners and Park Nicollet tumor registries contain a comprehensive profile of all newly diagnosed cancer using standards set by the American College of Surgeons.

	HEALTH PARTNERS		PARK NICOLLET	
	2017	2018	2017	2018
ANALYTIC CASES*	2,199	2,224	2,690	2,792
NON-ANALYTIC CASES**	461	401	0	0
PERCENTAGE OF CASES PRESENTED AT TUMOR CONFERENCES (GENERAL, GYN, BREAST, LUNG)	26.4% (582)	28.8% (642)	24% (645)	22% (625)

*Analytic: cases diagnosed and/or having initial therapy at HealthPartners or Park Nicollet

**Non-analytic: cases having all initial therapy elsewhere, seen at HealthPartners or Park Nicollet for further care and treatment

**TABLE 3:
2018 Leading Sites of Cancer Incidence**

CANCER TYPE – MALES	HEALTHPARTNERS		PARK NICOLLET	
	MALE (n=937)	%	MALE (n=1303)	%
PROSTATE GLAND (includes non-analytic)	246	21	392	30
SKIN (includes non-analytic)	153	13	260	20
BRONCHUS & LUNG	110	12	101	8
URINARY BLADDER	59	6	78	6
LYMPH NODES	54	6	71	5
BLOOD & BONE MARROW	72	8	68	5
COLON & RECTUM	83	9	66	5
PANCREAS	39	4	34	3
KIDNEY	54	6	33	3
ESOPHAGUS	17	2	24	2

CANCER TYPE – FEMALES	HEALTHPARTNERS		PARK NICOLLET	
	FEMALE (n=1287)	%	FEMALE (n=1459)	%
BREAST	564	44	603	41
SKIN (includes non-analytic)	120	8	155	11
BRONCHUS & LUNG	113	8	129	9
CORPUS UTERI	75	5	93	6
COLON & RECTUM	76	4	92	6
LYMPH NODES	46	4	61	4
BLOOD & BONE MARROW	61	5	61	4
THYROID GLAND	41	2	42	3
URINARY BLADDER	26	2	32	2
PANCREAS	35	3	29	2
OVARY	23	2	29	2
KIDNEY	32	3	22	2

Quality performance

Palliative care referrals for patients with stage IV lung cancer

Studies have shown that patients with newly diagnosed, stage IV non-small cell lung cancer that have early intervention palliative care experience a better quality and length of life. In the last year, we initiated a goal to increase the number of referrals to palliative care for these patients. The result is that 75% of patients with this diagnosis received a referral for consultation.

Improved diagnosis of soft tissue sarcomas

Soft tissue sarcomas (STS) can be delayed in diagnosis when they're mistaken for more common, benign lesions. Increased recognition and expedited evaluation of worrisome soft tissue masses could lead to earlier diagnosis. The results of this quality improvement project include:

- 19 clinicians had experience with best practice alerts (BPA) during the study period
- Pre and post-test surveys showed a statistically significant improvement in clinician confidence in evaluating soft tissue masses
- Only 16% of respondents felt they were interacting with BPA too often
- 73% of respondents indicated BPA enhanced their awareness of soft tissue sarcomas

Seamless communication between care teams

Clinicians and nurses in medical oncology can now view treatment notes from radiation oncology visits to help better manage patient symptoms. This change went live in Epic on April 1, 2019. This allows for improved communication and more seamless care especially for patients receiving concurrent radiation and chemotherapy.

Reducing nausea in patients

Most patients are given anti-nausea medication, called an antiemetic, before chemotherapy is administered. To standardize the antiemetic instructions and experience for our patients, we refreshed our clinicians on the antiemetic standard letters for high, medium, and low emetic chemotherapy regimens and included those letters in Epic. Care teams use this information to better educate patients on nausea prevention related to chemotherapy.

Improving outcomes for patients with head and neck cancer

Patients with head and neck cancers that are undergoing concurrent chemotherapy and radiation treatment are at high risk of experiencing mouth sores, esophagitis and poor appetite. A review of patient data — including the number of emergency department visits as well as the number of treatment changes and weight as treatment progresses — will be included in this quality improvement project. This data will aid our clinicians in making more informed decisions on whether to insert a feeding tube prior to starting the patient's treatment.

Meeting patients' legal needs

Due to the complexity of cancer care, many patients have legal needs that aren't being met in an oncology care setting. Eligibility for traditional legal aid service is tied to a very strict, low-income levels. This quality improvement project piloted the viability of having legal counsel embedded within the cancer center to understand how removing barriers and resolving legal issues can support overall patient well-being. The results revealed that patients of all income levels have worries and questions about legal issues that arise because of their diagnosis and treatment. Of the 26 patients in the study, 24 had all of their questions answered and issues resolved during their clinic visit, while two qualified for estate planning assistance that will continue outside the clinic.

HPV Vaccination

According to the Center for Disease Control, more than 33,000 men and women get HPV cancers in the U.S. each year. Though incidence rates are not high compared to other cancers, HPV-associated cancers are highly preventable. Fraunshuh Cancer Center partnered with the American Cancer Society to ensure more adolescents throughout our community became fully vaccinated against HPV cancers and pre-cancers. Data indicated only 62% and 21% of patients had completed the first and second dose of the HPV vaccination series. After a year-long quality improvement project that included training more than 700 clinicians, those dose rates increased to 72% and 32%. According to Centers for Disease Control (CDC), the state average is 48.3% and 20.8%.

Give hope. Give possibility.

In 2018, through Regions Hospital Foundation and Park Nicollet Foundation, nearly 1,200 donors gave more than \$740,000 to support meaningful care for those affected by cancer at Regions Hospital Cancer Center and Park Nicollet Frauenshuh Cancer Center.

Your generous gifts support:

- Basic needs assistance
- Care navigation assistance
- Classes and support groups
- Clinical cancer research
- Integrative therapies including music and massage therapy
- Non-moving patient care model
- Survivorship programming



Be a part of our mission in action

Donate at parknicollet.com/give or contact us at foundation@parknicollet.com.



Make a difference today

Donate at regionshospital.com/donate or contact us at rhf@healthpartners.com.



"What we have at Park Nicollet Frauenshuh Cancer Center is top notch. I think the programs and the resources available are incredible, and I refer people here all the time."

Steve, colon cancer survivor and donor



"Regions is trying very hard to bring new clinical trials closer to patients, and I'd like to help with that."

John, multiple myeloma cancer patient and donor

Cancer committee members 2019

Our cancer committees meet quarterly to review all aspects of our program. This includes information related to cancer conferences, community outreach, research and quality improvement, as well as all the teams involved in cancer care.

HealthPartners

Sue Braaten, RHIT, CTR
Oncology Registry

Diana Christensen Johnston, RN, OCN
Nurse Manager, Cancer Center

Linda Christinsen-Rengel, NP
Breast Health Center

Christine Colbach, MD
Pathology

Kevin Collis, RN, OCN
Nurse Navigator

Kim Duffy, RD
Food and Nutritional Services

Holly Guida, RN-BSN, MBA
Oncology Operations Specialist

Laura Holasek
Director, Cancer Center

Randy Hurley, MD
Medical Oncology

Cindy Johnston
Genetic Counselor

Lashonda Soma, MD
Radiology

Rory Malloy
Quality Management

Pam Mason
American Cancer Society

Todd Morris, MD
General Surgery,
Surgical Oncology

Gretchen Niemioja, MD
Rehabilitation Services

Jennifer Pluff, RHIT, CTR
Oncology Registry

Trisha Prescott, MD
Radiology

Amanda Richards, RN, OCN, BSN
Research

James Risser, MD
Internal Medicine, Palliative Care

Rob Ruff
Pastoral Care

Charles Shideman, MD
Radiation, Oncology

James Schlaefel, MD
General Surgery,
Surgical Oncology
(Cancer Liaison Fellow,
American College of Surgeons)

Caitlyn Squire, LICSW, OSW-C
Social Services

Bonnie Sweeney, RN
Nursing

**Beth Werner, RN, MS,
CHPN, CHPCA**
HealthPartners Hospice
and Palliative Care

Park Nicollet

Christopher Chow, MD
Colon and Rectal Surgery

Justin Eklund, MS, CCRP
Clinical Research

Britt Erickson, MD
Gynecology Oncology

Kelly Furda, MD
Radiologist

Nancy Gelle, BSN, RN
Palliative Care,
Home Care, Hospice

Howard Haines, MN
Emergency Medicine

Michael Haley, MD
Radiation Oncology

Kristin Hanrahan
Quality Improvement

Megan Hanson, MS, CGC
Genetics

Keith Heaton, MD
General Surgery,
Surgical Oncology
(Cancer Liaison Fellow,
American College of Surgeons)

Laura Holasek
Director, Cancer Center

Anne Hopkins, RN, OCN
Oncology Program Manager

Christian Loger, BA, MBA
Jane Brattain Breast Center

Pamela Mason, MS
American Cancer Society

Matt McCoy, MD
Pathology

Vicki Norton, BSN, OCN, RN
Nursing

Carol Ann Petersen, LICSW, MAHS
Patient Support and Education

Jocelyn Rieder, MD
Urology

Emily Schoh, RN
Nursing

Bryan Schuler, PharmD, BCOP
Pharmacy

Jane Siekkinen, BS, CTR
Oncology Registry

Paul Spilde, PT
Rehabilitation Services

Janet Stark, BCC
Chaplain

Eric Weinberg, MD
Diagnostic Radiology

Mark Wilkowske, MD
Medical Oncology

Oncology clinician team

Lindsay Albert, NP-AGPC	Peter Hurley, MD	Jason Oakes, PA-C
Daniel Anderson, MD, MPH	Randy Hurley, MD	Richard Peterson, MD
Peter Argenta, MD	Lisa Huset, PA-C	Karen Rabenau, MD
Annie Barlow, MPAS, PA-C	Gretchen Ibele, MD	Brian Rank, MD
Kathryn Baxstrom, MD	Lisa Illig, MD	Anne Reiber, ANP, GNP
Kacy Berquist, MSN, APRN, NP-C	Sarah Jax, NP-AGPC	Jim Risser, MD
Michael Blazer, MD	Jeffry Jaffe, MD	Daniel Schneider, MD
Linda Carson, MD	Balkrishna Jahagirdar, MBBS	Melissa Sherman, MD
Joel Carter, MD	Kathryn Jelle, PA-C	Charles Shideman, MD
Cathleen Chen, MD	Yan Ji, MD	Mary Spengler, RNC, ANP
Candy Corey, MD	Khalid Ali Kambal, MB BCH	Amy Spomer, MD
Janel Cox, MD	Kendra Kubiak, MD	Cierra Sroda, PA-C
Kurt Demel, MD	Priya Kumar, MD	Somu Suppiah, MD
Dave Drone, PharmD	Brenda Larson, MD	Deanna Teoh, MD
Arkadiusz Dudek, MD, PhD	Rachel Lerner, MD	Jane Thompson, PharmD
Mary Ehresman, FNP, ADCN	Ayse Malcolm, MD	Kandice Tolic, NP-WH
Brad Farrell, PharmD	Sarah Manuels, MPAS, PA-C, MPH	Bryan Trottier, MD
Lori Fewer, CFNP	Steven McCormack, MD	Punit Wadhwa, MBBS
Chitra Ganesan, MBBS	Mark Menge, MD	Mark Wilkowske, MD
Michael Haley, DO	Craig Mescher, MD	Kelly Young, DNP-F
Robert Haselow, MD	Kathryn Moore, MD	Dylan Zylla, MD, MS
Keith Heaton, MD	Sally Mullany, MD	
Jason Hoiness, PharmD	Gretchen Niemioja, MD	



Dedicated to providing excellent care

On average, **97.2%** of our patients would recommend our clinicians, according to the National Research Corporation. Other ratings include:

- Would recommend: **95.7%**
- Spent enough time with patient: **97.3%**
- Provider listened: **97.4%**
- Provider knew my medical history: **94.7%**
- Provider showed respect for what the patient said: **97.8%**

HealthPartners Institute

Advancing health and well-being through research and education

We are research and education together at HealthPartners. We conduct hundreds of research studies each year to improve lives. We also support clinical learning at HealthPartners through the training of many health professions.

We are a member of the national Cancer Research Network and offer unique and novel therapies through an Early Phase Therapeutics Program using the newest investigational drugs available for research. Through clinical trials, we support patients with cancer in our community and contribute to life-changing science around the globe.

To make an appointment, call:

Park Nicollet Frauenshuh Cancer Center
952-993-3248

Regions Hospital Cancer Care Center
651-254-3572

HealthPartners Cancer Care Center – Riverside
612-341-4800

Hutchinson Health Cancer Center
320-484-4695

Lakeview Hospital Cancer Care – Stillwater
651-439-1234

Park Nicollet Clinic & Specialty Center – Burnsville
952-993-3248

Park Nicollet Clinic & Specialty Center – Maple Grove
952-993-3248

For more information or to make a referral, contact Laura Holasek at laura.holasek@parknicollet.com or **651-254-4656**