



2022 ONCOLOGY ANNUAL REPORT



With award-winning cancer services
across Minnesota and western Wisconsin,
care is always close by.

Keeping patients at the center of care

HealthPartners has a longstanding commitment to keeping our patients at the forefront of care. What truly sets us apart is the support our patients receive from the moment they walk through our doors. We guide them from the first appointment through treatment and recovery, so they never need to feel alone.

Updated, easier-to-find names

A top priority is to make our care easy to locate and access. As a result, we united our various locations under one name – HealthPartners. While the names have changed slightly, our teams have remained the same.

- HealthPartners Frauenshuh Cancer Center
- HealthPartners Cancer Center at Regions Hospital
- HealthPartners Cancer Care at Park Nicollet Burnsville
- HealthPartners Cancer Care at Park Nicollet Maple Grove
- HealthPartners Cancer Care at Lakeview Hospital
- HealthPartners Cancer Center at Hutchinson Health
- HealthPartners Cancer Care at Olivia Hospital & Clinic

We also continue to provide physician services to Cancer Center of Western Wisconsin in six locations and St. Francis Medical Center.

One convenient phone number

Simplifying our name was only part of the work we're doing to continually improve the patient experience. Metro area locations now have one phone number, making it easier to schedule appointments and contact your care team: **612-341-4800**.

Expanded services close to home

We've grown over the years to provide more services closer to where our patients live. That means access to the latest medical treatments, including medical trials, without having to travel long distances. Our most recent addition is HealthPartners Cancer Care at Olivia Hospital & Clinic. The incredible depth of knowledge and resources across our organization is available to all patients, regardless of location.

We have an exceptional team of professionals who work closely together to provide quality, consistent care. We offer award-winning cancer care, the latest treatment options, and support for patients and families. Our commitment to providing the best care possible is demonstrated through our certification by the American College of Surgeons' Commission on Cancer and participation in the American Society of Clinical Oncology's Quality Oncology Practice Initiative (QOPI).

Thank you for taking the time to learn about our ongoing work in caring for our patients. Please contact us if you have questions about this report or the care we offer.



Daniel Anderson, MD, MPH
Medical Director
HealthPartners Cancer Care
daniel.m.anderson@healthpartners.com



Mark A. Wilkowske, MD
Medical Director
HealthPartners Cancer Care
mark.wilkowske@parknicollet.com



Laura Holasek
Administrative Director
HealthPartners Cancer Care
laura.holasek@parknicollet.com



ASCO'S QOPI CERTIFICATION





New name, same expert care

Simplifying care is a priority for us. As part of that ongoing effort, we updated the names of our locations in 2022 to make them easier for patients and families to find and access care. Unified under the HealthPartners name and one phone number, our locations and teams are the same, and our commitment to providing seamless, expert care is unchanged.

Minnesota locations

HealthPartners Frauenshuh Cancer Center

This comprehensive cancer center in St. Louis Park was designed using extensive input from our patients and care teams. The innovative, non-moving patient care model was the first of its kind in the U.S. to create a place where all care can happen in one room, including access to innovative clinical trials. This patient-focused care allows patients to conserve their energy to do the things that are most important to them.

HealthPartners Cancer Center at Regions Hospital

Located on the Regions Hospital campus in St. Paul, this is one of our flagship cancer centers which features private treatment rooms to support patient comfort. Our experienced oncology team is here to help patients find answers, discuss treatment options and start a personalized care plan as soon as possible. With comprehensive services for diagnosis, treatment and support, along with access to research and clinical trials, high-quality cancer care is close to home.

HealthPartners Cancer Care at Lakeview Hospital

We offer a full range of services to ensure patients have all the care they need in the St. Croix Valley. From advanced diagnostics to the latest treatments and infusion therapies, our experienced oncology team provides high-quality care for a wide range of conditions.

HealthPartners Cancer Care at Park Nicollet Maple Grove and Burnsville

Conveniently located on Park Nicollet campuses, our cancer centers provide expert care and access to all the services patients require such as lab, radiology, physical therapy and specialty consultants.

HealthPartners Cancer Center at Hutchinson Health

Our clinic offers care and support to patients with cancer in western Minnesota. We offer exceptional cancer care, including access to the latest technology and six private infusion rooms.

HealthPartners Cancer Care at Olivia Hospital & Clinic

We bring the leading medical care you expect to find in a large city to the comfort and convenience of Olivia. Opened in 2022, we provide personalized treatment plans, patient education and guidance to our patients.

St. Francis Cancer Center

Park Nicollet physicians partner with other leading medical groups to provide personalized cancer care at this newly remodeled oncology clinic and infusion center.

Wisconsin locations

HealthPartners oncologists have been proudly supporting cancer care in Western Wisconsin for over 10 years. We partner with six different locations to bring care close to home.

Westfields Hospital & Clinic

Cancer Center of Western Wisconsin

Hudson Hospital & Clinic

Cancer Center of Western Wisconsin

Amery Hospital & Clinic

Cancer Center of Western Wisconsin

Osceola Medical Center

Cancer Center of Western Wisconsin

St. Croix Regional Medical Center

Cancer Center of Western Wisconsin

Western Wisconsin Health

Cancer Center of Western Wisconsin

Cancer care locations

Minnesota

- 1. HealthPartners Frauenshuh Cancer Center
- 2. HealthPartners Cancer Center at Regions Hospital
- 3. HealthPartners Cancer Care at Lakeview Hospital
- 4. HealthPartners Cancer Care at Park Nicollet Maple Grove and Burnsville
- 5. HealthPartners Cancer Center at Hutchinson Health
- 6. HealthPartners Cancer Care at Olivia Hospital & Clinic
- 7. St. Francis Cancer Center

Wisconsin

- 8. Westfields Hospital & Clinic – Cancer Center of Western Wisconsin*
- 9. Hudson Hospital & Clinic – Cancer Center of Western Wisconsin*
- 10. Amery Hospital & Clinic – Cancer Center of Western Wisconsin*
- 11. Osceola Medical Center – Cancer Center of Western Wisconsin*
- 12. St. Croix Regional Medical Center – Cancer Center of Western Wisconsin*
- 13. Western Wisconsin Health – Cancer Center of Western Wisconsin*

*HealthPartners provides physician services in partnership with these locations



Highlights of 2022



Cancer services now available at Olivia Hospital & Clinic

Olivia Hospital & Clinic joined HealthPartners in 2020, connecting patients to a comprehensive care system. The local cancer care team provides personalized treatment plans and patient education. If specialized care is needed, patients can quickly be connected to our team of oncologists, genetic counselors, surgeons, nurses and many others.

We updated our clinic to provide improved, more patient-friendly space in 2022. The new space was thoughtfully designed to prioritize the patient experience. Instead of moving from room to room, services are brought to the patient. This helps conserve precious energy and time. We also added a new fast-track room for non-chemo-based infusions, along with two private suites for chemotherapy treatment.

To make an appointment or learn more about Olivia Hospital & Clinic, visit healthpartners.com/cancer or call **320-523-3011**.

HealthPartners launches myGenetics

HealthPartners teamed up with Helix, a leading genomics company, to study how DNA impacts health. This community health research program called myGenetics helps patients learn more about their ancestry, traits and genetic health risks, including:

- Hereditary breast and ovarian cancer
- Hereditary non-polyposis colorectal cancer (Lynch syndrome)
- Familial hypercholesterolemia (hereditary high cholesterol)
- Regional ancestry
- Traits like caffeine sensitivity, earwax type and more

The results will be used to develop a secure genetic research database to help researchers learn what may cause certain diseases and how to treat them more effectively. Because this is a research study, there's no cost to our patients. Our goal is to enroll 100,000 people over four years.

Visit healthpartners.com/mygenetics for more information.



Achieved national accreditation for rectal cancer

Methodist Hospital is seeking accreditation by the Commission on Cancer's (CoC) National Accreditation Program for Rectal Cancer (NAPRC), a quality program of the American College of Surgeons (ACS). It's based on successful international models that emphasize program structure, patient care processes, performance improvement and performance measures.

Annually, we provide high quality, patient-centered care to approximately 35 newly diagnosed patients. Our multidisciplinary team is led by G. Eric Belzer, MD, medical director of colorectal surgery. We use colorectal nurse navigators to help guide and connect our patients with the resources and appointments they need. This level of care results in decreased delays in patient care and increased patient satisfaction.

In September 2022, Methodist Hospital completed its NAPRC accreditation survey. The program was recognized for its excellent leadership, coordination and mission support. Final certification accreditation status is expected spring 2023.

Breast Center recertified by NAPBC

Park Nicollet Jane Brattain Breast Center in St. Louis Park was recertified by National Accreditation Program for Breast Center (NAPBC) in 2022. This accreditation is provided to centers committed to providing the best possible care to patients with diseases of the breast. Each breast center must undergo a rigorous evaluation and review of its performance and compliance with NAPBC Standards.

Awards and achievements

Renewal of QOPI certification

HealthPartners Frauenshuh Cancer Center and HealthPartners Cancer Center at Regions Hospital achieved another three-year certification from the American Society of Clinical Oncology (ASCO) Quality Oncology Practice Initiative (QOPI).

This program provides tools for measurement, benchmarking and quality improvement of more than 80 quality measures. This initiative is an oncologist-led, quality assessment program designed to promote excellence in cancer care.

Top 25% inpatient unit satisfaction

The oncology inpatient care unit at Regions Hospital was honored for delivering excellence in the patient experience. This new recognition celebrates teams who rank in the top 25% for care based on patients' ratings of the hospital during their stay. Only top patient satisfaction ratings are eligible for this honor.



Lisa Johnson-Bleskey, BSN, Director

Nurse Leader of the Year award

Lisa Johnson-Bleskey, BSN, Director, Cancer Center of Western Wisconsin, was named Nurse Leader of the Year by the Wisconsin Organization of Nurse Leaders. This award recognizes outstanding leadership in nursing through self-development and by sharing knowledge and expertise in the field.

Patient safety award

Barbara Sweeney, RN, received the Good Catch award from Park Nicollet. This award recognizes employees who report an event or situation that could have been harmful to the patient but was prevented.



Team members celebrate the 10-year anniversary of CCWW

Cancer Center of Western Wisconsin celebrates 10 years

More than 200 colleagues gathered last October to celebrate the 10th anniversary of Cancer Center of Western Wisconsin (CCWW). Through CCWW, three HealthPartners hospitals in western Wisconsin collaborate with three independent local hospitals to provide high-quality cancer services to patients in our service area. More than 4,000 patients have been served in the past decade. CCWW helps patients have their cancer treatment delivered close to home by compassionate, highly trained care teams.

Nurse navigator program expanded

Nurse navigators specialize in coordinating care and make a significant difference in every patient's experience. With their help, patients can focus on their physical and emotional health, without spending time juggling multiple care appointments. This level of care was previously limited to patients with breast cancer. It expanded in 2022 to support patients in the west metro area with lung cancer, with a goal to keep expanding in the future.

Patient satisfaction

93.9%

93.9% of our patients would recommend our cancer clinics, according to National Research Corporation.

Community awareness and support

We're actively involved in programs to increase cancer screenings, community awareness and support for patients with cancer.

Caring for patients by video, phone and in person

We support our patients' health and well-being with in-person visits, phone visits and video visits. Options in receiving care can help patients balance their appointments with other important activities.

Help with basic needs

Assistance with everyday needs such as transportation, food and gas can be vital to patients and their families during treatment. Strong partnerships with area organizations including A Breath of Hope (ABOH), Angel Foundation, Gilda's Club, Hope Chest, Open Arms of Minnesota, Pathways and the Pay it Forward Fund have made it possible to offer personalized help. We partner with the American Cancer Society on many efforts such as transportation grants and volunteer drivers with the Road to Recovery program.

Brain cancer support group

At our brain tumor support group, patients and families can virtually meet to share their feelings and concerns. The group strives to provide a sense of belonging, safety and courage to those affected by a brain tumor.

Lung cancer support group

This virtual, monthly group at Regions Hospital provides an opportunity for patients with lung cancer to connect. There's a sense of empowerment and belonging when meeting others with a similar cancer diagnosis. As a patient shared, "It's just so different to be with people who are really walking in the same shoes." This support group is sponsored by A Breath of Hope.

A Breath of Hope Lung Foundation

This organization fights lung cancer by funding innovative research, raising awareness and supporting patients and families. We're fortunate to have A Breath of Hope support our lung cancer support group as well as other educational opportunities for our patients, including:

- Annual Walk/Run
- Lung Cancer Patient Summit

Integrated, healing therapies

Integrated therapies such as massage, music therapy, pet therapy and spiritual care can improve patients' overall well-being before, during and after treatment.

- **Music therapy program** – Our highly acclaimed program is available at Methodist Hospital and Regions Hospital. These locations are training sites for interns, a program approved by the American Music Therapy Association (AMTA).
- **Massage therapy** – This personalized service was expanded to include Park Nicollet Clinic & Specialty Center Burnsville.
- **Pet therapy** – In select locations, volunteers and their pets bring healing and joy to patients.



Screening and prevention

Be Pink and breast cancer awareness

Be Pink encourages women in the Twin Cities to be aware, proactive and empowered with their breast health, including screenings and early breast cancer detection.



Mammo a-go-go is a mobile mammography unit that visits local communities and events to make getting a mammogram easy. After closing down for a short period during the pandemic, the number of women served has rebounded. Nearly 1,200 women across Minnesota were screened at community

outreach events in 2022. As a result, 38 total cancers were identified on our mobile units.

In addition, we help thousands of local women in need receive mammograms, diagnostic services and breast health education. Park Nicollet Foundation's annual fundraising campaign supports Park Nicollet Jane Brattain Breast Center's Mammo a-go-go Community Outreach Program. The campaign was a huge success that helped raise over \$190,000 in 2022.

Colorectal cancer screening

In 2022, U.S. Preventive Services Task Force, an independent, volunteer panel of national experts in prevention and evidence-based medicine, recommended that screenings for colorectal cancer start at age 45, compared to the prior recommendation of age 50. In response, we aligned our tools for screening in patient charts around this new recommendation. We also launched comprehensive outreach and marketing efforts to connect with more people. As a result, nearly 36,000 patients received colonoscopies, a 7% increase over 2021.

To reach even more patients, we mailed over 10,000 fecal immunochemical test (FIT) kits to patients in 2022 who have never been screened and met certain qualifications. FIT kits are an in-home, non-invasive tool for screening for colorectal cancer. We also expanded the availability of FIT kits at Hutchinson Health and Olivia Hospital & Clinic.

In August, we sponsored the 2022 Get Your Rear in Gear – Twin Cities. Nearly 1,000 runners, walkers and bikers joined together to raise awareness and funds for colon cancer education, awareness and screenings.

The combination of these efforts resulted in an increase of nearly 2% in screenings for colorectal cancer across our organization of 281,000 patients and members.



Community well-being initiatives

HealthPartners has a long history of promoting health and well-being in our communities through a variety of initiatives. In 2022, we focused on reducing health care disparities and engaging with communities to address social factors that affect health, such as education, housing and access to food.

Preventive screenings – We're working to eliminate gaps in screenings to help prevent more serious illnesses and health conditions. Because we offer access to same-day mammograms, women can get their annual breast exam when they're at our hospitals and clinics for other appointments.

Language services – When patients don't understand aspects of their care, it affects health outcomes. We offer language interpreters for several languages to ensure our patients who speak English as a second language, or speak no English, have the best care possible.

Mental health – People want to feel like their identity is understood by their care team. That's why HealthPartners uses an online tool that can identify mental health doctors and clinicians by language, race, ethnicity, gender and sexual orientation.

**Everyone welcome,
included and valued**

Education and research

Critical to our mission of helping patients with cancer is our engagement in education and research. Teaching and education ensure our clinicians and care teams keep pace with new discoveries in the diagnosis and treatment of cancer. Research, through participation in clinical trials, gives our patients access to new therapies.

We're also taking a leading role in local research by developing an early phase therapeutics program at Regions Hospital. We offer a variety of clinical trials at all our facilities that not only prevent and treat cancer, but also treat symptoms and side effects of cancer therapies. The Metro-Minnesota Community Oncology Research Consortium (**mmcorc.org**) is a nonprofit research consortium of 22 local hospitals and clinics. It provides people in our community access to the newest therapies available for cancer treatment and prevention through national cancer clinical trials. HealthPartners and Park Nicollet are active partners within the research consortium, which is administered by HealthPartners Institute. Dan Anderson, MD, MPH, and Yan Ji, MD, provide consortium leadership as the principal investigator and assistant principal investigator.

Visit healthpartners.com/institute to learn more about our Cancer Research Center.

Select publications

Agarwal N, Tangen CM, Hussain MHA, Gupta S, Plets M, Lara PN, Harzstark AL, Twardowski PW, Paller CJ, **Zylla DM**, Zibelman MR, Levine E, Roth BJ, Goldkorn A, Vaena DA, Kohli M, Crispino T, Vogelzang NJ, Thompson IM, and Quinn DI. Orteronel for Metastatic Hormone-Sensitive Prostate Cancer: A Multicenter, Randomized, Open-Label Phase III Trial (SWOG-1216) *Journal of Clinical Oncology* 2022 40:28, 3301-3309.

Basch E, Schrag D, Henson S, Jansen J, Ginos B, Stover AM, Carr P, Spears PA, Jonsson M, Deal AM, Bennett AV, Thanarajasingam G, Rogak LJ, Reeve BB, Snyder C, Bruner D, Cella D, Kottschade LA, Perlmutter J, Geoghegan C, Samuel-Ryals CA, Given B, Mazza GL, Miller R, Strasser, JF, **Zylla DM**, Weiss A, Blinder VS, Dueck AC. Effect of Electronic Symptom Monitoring on Patient-Reported Outcomes Among Patients With Metastatic Cancer: A Randomized Clinical Trial. *JAMA*. 2022;327(24):2413-2422.

Bellinger C, Foley KL, Dressler EV, Kittel C, Miller DP, Weaver KE, Sutfin EL, Petty WJ, Spangler J, Stone R, **Anderson DM**, Kehn H, Steenstra C, Panikkar R, Chiles C. Organizational Characteristics and Smoking Cessation Support in Community-Based Lung Cancer Screening Programs, *Journal of the American College of Radiology*, Volume 19, Issue 4, 2022. Pages 529-533.

Gander JC, Maiyani M, White LL, Sterrett AT, Güney B, **Pawloski PA**, DeFor T, Olsen Y, Rybicki BA, Nestlund-Dudas C, Sheth D, Krajenta R, Purushothaman D, Honda S, Yonehara C, Goddard KAB, Prado YK, Ahsan H, Kibriya MG, Aschebrook-Kilfoy B, Chan CH, Hague S, Clarke CL, Thompson B, Sawyer J, Gaudet MM, Feigelson HS. Developing an algorithm across integrated healthcare systems to identify a history of cancer using electronic medical records. *J Am Med Inform Assoc*. 2022 Mar 29. PMID: 35348718.

Guggisberg J, Schumacher M, Gilmore G, and **Zylla DM**. Cannabis as an Anticancer Agent: A Review of Clinical Data and Assessment of Case Reports. *Cannabis and Cannabinoid Research* 2022 7:1, 24-33.

Hunter J, Schneider J, Firemark A, Davis J, Gille S, **Pawloski PA**, Liang SY, Schlieder V, Rahm A. Should Health Systems Share Genetic Findings with At-Risk Relatives When the Proband is Deceased? Interviews with Individuals Diagnosed with Lynch Syndrome. *J Patient Cent Res Rev*. 2022 Oct 18. PMC9584081.

Joseph CL, Tang A, Chesla DW, Epstein MM, **Pawloski PA**, Stevens AB, Waring SC, Ahmedani BK, Johnson CC, Peltz-Rauchman CD. Demographic differences in willingness to share electronic health records in the All of Us Research Program. *J Am Med Inform Assoc*. 2022. PMID: 35472083.

Jax S, Schmiechen K, **Zylla D**, Holy Smokes! Developing a Cannabis Clinic for Patients with Cancer. *Oncology Issues* (2022), Volume 37, Number 4.

Johnson M, **Dudek AZ**, Sukari A, Call J, Kunk PR, Lewis K, Gainor JF, Sarantopoulos J, Lee P, Golden A, Harney A, Rothenberg SM, Zhang Y, Goldman JW. ARRY-382 in Combination with Pembrolizumab in Patients with Advanced Solid Tumors: Results from a Phase 1b/2 Study. *Clinical Cancer Research* (2022), Volume 28, Issue 12, Page 2517-2526.

Tyler LC, Le AT, Chen N, Nijmeh H, Bao L, Wilson TR, Chen D, Simmons B, Turner KM, Perusse D, Kasibhatla S, Christiansen J, **Dudek AZ**, Robert C. Doebele. MET gene amplification is a mechanism of resistance to entrectinib in ROS1+ NSCLC. *Thoracic Cancer* (2022), Volume 13, Issue 21, Pages 3032-3041.

Xie Z, Børset M, Svéen K, Bøe OW, Chan EC, Lack JB, Hornick KM, Verlicchi F, Eisch AR, Melchio R, **Dudek AZ**, Druey KM. Markers of Endothelial Glycocalyx Dysfunction in Clarkson Disease. *Journal of Translational Medicine* (2022), Volume 20, Article number 380.

Zylla DM. Response to letter to the editor. *Support Care Cancer* 30, 4581-4582 (2022).

Zylla DM, Parsons H, Ziegenfuss JY, Lindgren B, Park S, Blaes AH. Self-reported efficacy and usage of cannabis among patients with cancer within the Minnesota Cannabis Program. *Journal of Clinical Oncology* 2022 40:16_suppl, 12122-12122.

Zylla DM, Jax S, Schmiechen K, Jelle K, Gilmore G. A novel cannabis education clinic for patients with cancer: Patient characteristics from initial visit. *Journal of Clinical Oncology* 2022 40:28 suppl, 298-298.

Select trials

18-BI-1206-03: Phase 1/2a Trial of BI-1206, a Monoclonal Antibody to CD32b (FcγRIIb) in Combo with Pembro in Subjects with **Advanced Solid Tumors** Previously Treated with Anti-PD1 or Anti-PDL1 Antibodies

ACT FAST 2018-07: Blood and Stool Sample Collection in Subjects with a Diagnosis of **Colorectal Cancer or Colorectal Lesion**

ANV419-101: A Phase 1/2 Study of ANV419 as Monotherapy or in Combination with Anti-PD-1 or Anti-CTLA-4 Antibody Following Anti-PD-1/Anti-PD-L1 Antibody Treatment in Patients with **Unresectable or Metastatic Cutaneous Melanoma**

ASTX295-01: Phase 1/2 Open-Label Study of the Safety, Pharmacokinetics, and Preliminary Activity of ASTX295 in subjects with **Wild-Type TP53 Advanced Solid Tumors**

CBY719H12301: Alpelisib Plus Nab-paclitaxel in Patients with Advanced **Triple-Negative Breast Cancer** with PIK3CA Mutation or PTEN Loss without PIK3CA Mutation (EPIK-B3)

Connect Myeloid: The **Myelodysplastic Syndromes (MDS) and Acute Myeloid Leukemia (AML)** Disease Registry

Destiny-07: A Phase 1b/2 Multicenter, Open-label, Dose Expansion Study to Explore the Safety, Tolerability, and Anti-tumor Activity of Trastuzumab Deruxtecan (DC 8201a, T-DXd) Monotherapy and Combination in Patients with **Metastatic HER2-Positive Breast Cancer**

Destiny-08: A Phase 1b Study to Explore the Safety, Tolerability, Pharmacokinetics and Anti-tumor Activity of Trastuzumab Deruxtecan (DS 8201a, T-DXd) in Combination with Other Anti-cancer Agents in Patients with **Metastatic HER2-low Breast Cancer**

EVOKE-01: Open-Label, Global, Multicenter, Randomized, Phase 3 Study of Sacituzumab Govitecan Versus Docetaxel in Patients with **Advanced or Metastatic Non-Small Cell Lung Cancer (NSCLC)** with Progression on or After Platinum-Based Chemotherapy and Anti-PD-1/PD-L1 Immunotherapy

GNX-001: A Phase 1 Study of GNX102 in Patients with **Advanced Solid Tumors**

HC-404-FCP-2011: A Multicenter, Open-label, Phase 1a Study of HC-5404-FU in Subjects with Selected, Advanced Solid Tumors (**RCC—clear or papillary, gastric adenocarcinoma, HER2+ MBC, SCLC**)

MC17C1: Double-Blinded, Placebo-Controlled Trial to Explore the Anti-Androgen, Ketoconazole, for Treating Patients with an Ongoing **EGFR Inhibitor Induced Rash**

MK-6482-012: An Open-label, Randomized Phase 3 Study to Evaluate Efficacy and Safety of Pembrolizumab (MK-3475) in Combination with Belzutifan (MK-6482) and Lenvatinib (MK-7902), or MK-1308A in Combination with Lenvatinib, Versus Pembrolizumab and Lenvatinib, as First-line Treatment in Participants with **Advanced Clear Cell RCC**

NDS-DLBCL-003: Connect **Lymphoma** Disease Registry: A US-Based Prospective Observational Cohort Study

NeoCOAST-2 (D9077C00001): A Phase II Open-Label, Multicentre, Randomised Study of Neoadjuvant and Adjuvant Treatment in **Patients with Resectable, Early-stage (II to IIIA) Non-small Cell Lung Cancer (NeoCOAST-2)**

NP303-102: ON TARGET: A Phase 3 Multicenter, Randomized, Double-blind Placebo-controlled Trial Evaluating Cofelemer for the Prophylaxis of Diarrhea in Adult **Patients with Solid Tumors** Receiving Targeted-cancer Therapies With or Without Standard Chemotherapy Regimens

PCORI PRO PM: Feasibility of Collecting and Adjusting Patient-Reported Outcomes for Quality Reporting in Chemotherapy Wave 2

PGG-BCA2121 / MK-3475-C99: A Multicenter, Open-label, Phase 2 Study of Imprime PGG and Pembrolizumab in **Patients with Metastatic Breast Cancer (mBCA)** Who Have Progressed Through Prior Hormonal Therapy

RGX104-001: A Ph 1 Study of RGX-104, a Small Molecule LXR Agonist, as a Single Agent and as Combo Therapy in Patients with **Advanced Solid Malignancies and Lymphoma with an Expansion in Select Malignancies (NSCLC & SCLC)**

SGNS40-002: A Phase 2, Open-Label basket study of SEA-CD40 in combination with other therapies in advanced malignancies – Relapsed/refractory **Metastatic Melanoma, Metastatic Uveal Melanoma, Metastatic PD-L1 Naïve melanoma, or Non-squamous Non-small cell Lung Cancer**

STAR-221: A Randomized, Open-Label, Multicenter Phase 3 Trial of Domvanalimab, Zimberelimab, and Chemotherapy Versus Nivolumab and Chemotherapy in Participants with **Previously-Untreated Locally Advanced Unresectable or Metastatic Gastric, Gastroesophageal Junction, and Esophageal Adenocarcinoma**

TAK981-1002: An Open Label, Dose-Escalation, Ph 1/2 Study to Evaluate the Safety, Tolerability, and Pharmacokinetics, of TAK-981 in Adult Patients with **Metastatic Solid Tumors or Lymphomas (Now in Phase 2 only)**

TTX-080-001: A First-in-human, Phase 1 Study to Evaluate the Safety of TTX-080, an HLA-G Antagonist, in Subjects with **Advanced Solid Tumors**

XTX202-01/02-001: A First-in-Human Multicenter Phase 1/2, Open Label Study of XTX202 in Patients with **Advanced Solid Tumors**



When Rosanne was diagnosed with an aggressive form of kidney cancer, her treatment plan included chemotherapy and immunotherapy. When the treatments had limited effect, Rosanne's doctor talked with her about enrolling in a clinical trial. Rosanne agreed and the results were inspiring. Three of her six tumors are gone, the other three have shrunk, and she reports no side effects.

We're actively involved in a number of research trials and projects, including phase 1, 2 and 3 clinical trials. Rosanne, like our other patients, was able to access emerging treatment options without traveling to faraway institutions.

Visit healthpartners.com/cancer to read Rosanne's story.

Quality measures

These quality measures indicate the portion of breast, lung, colon and rectum cancer patients treated according to recognized standards of care by diagnosis year. The results are reported to the Rapid Cancer Reporting System (RCRS) of the National Cancer Data Base (NCDB), a joint program of American College of Surgeons (ACoS) and American Cancer Society. NCDB is nationwide oncology outcomes database for more than 1,500 commission-accredited cancer programs.

| | | ESTIMATED PERFORMANCE RATES | | | | | |
|-------------------------------------------------------------------------------------------------------------------------------------------------------------------------------------------------------------------------------------------|-----------|-----------------------------|--------------|------------------|--------------------------|--------------|------------------|
| NCDB Select Breast Measures | | HEALTHPARTNERS REGIONS | | | HEALTHPARTNERS METHODIST | | |
| | | 2021 | 2020 | 2019 | 2021 | 2020 | 2019 |
| Radiation therapy is administered within 1 year (365 days) of diagnosis for women under age 70 receiving breast-conserving surgery for breast cancer | PR/EPR | 94.12% | 100% | 95.24% | 93.55% | 100% | 90% |
| | 95% CI | [87.88 – 97.98%] | [100 – 100%] | [89.07 – 98.20%] | [91.13 – 98.27%] | [100 – 100%] | [91.46 – 98.34%] |
| | BENCHMARK | 90% | 90% | 90% | 90% | 90% | 90% |
| Combination chemotherapy or chemo-immunotherapy (if HER2 positive) is recommended or administered within 4 months (120 days) of diagnosis for women under 70 with AJCC T1cN0M0, or Stage IB – III hormone receptor-negative breast cancer | PR/EPR | 100% | 100% | 100% | 91.67% | 100% | 100% |
| | 95% CI | [100 – 100%] | [100 – 100%] | [100 – 100%] | [86.75 – 100%] | [100 – 100%] | [100 – 100%] |
| | BENCHMARK | * | * | * | * | * | * |

*No benchmark

| | | ESTIMATED PERFORMANCE RATES | | | | | |
|------------------------------------------------------------------------------------------------------------------------------------------------------------------------------------------------------------------------------------------|-----------|-----------------------------|--------------|--------------|--------------------------|--------------|----------------|
| NCDB Select Lung Measures | | HEALTHPARTNERS REGIONS | | | HEALTHPARTNERS METHODIST | | |
| | | 2021 | 2020 | 2019 | 2021 | 2020 | 2019 |
| Systemic chemotherapy is administered within 4 months to day preoperatively or day of surgery to 6 months postoperatively, or it is recommended for surgically resected cases with pathologic, lymph node-positive (pN1) and (pN2) NSCLC | PR/EPR | 100% | 100% | 100% | 100% | 100% | 80% |
| | 95% CI | [100 – 100%] | [100 – 100%] | [100 – 100%] | [100 – 100%] | [100 – 100%] | [68.36 – 100%] |
| | BENCHMARK | 85% | 85% | 85% | 85% | 85% | 85% |

ESTIMATED PERFORMANCE RATES

NCDB Select Colon Measures

| | | HEALTHPARTNERS REGIONS | | | HEALTHPARTNERS METHODIST | | |
|--------------------------------------------------------------------------------------------------------------------------------------------------------------------------------------|-----------|------------------------|--------------|--------------|--------------------------|--------------|----------------|
| | | 2021 | 2020 | 2019 | 2021 | 2020 | 2019 |
| At least 12 regional lymph nodes are removed and pathologically examined for resected colon cancer | PR/EPR | 100% | 100% | 100% | 94.44% | 100% | 100% |
| | 95% CI | [100 – 100%] | [100 – 100%] | [100 – 100%] | [93.75 – 100%] | [100 – 100%] | [100 – 100%] |
| | BENCHMARK | 85% | 85% | 85% | 85% | 85% | 85% |
| Adjuvant chemotherapy is recommended or administered within 4 months (120 days) of diagnosis for patients under the age of 80 with AJCC Stage III (lymph node positive) colon cancer | PR/EPR | 100% | 100% | 100% | 83.33% | 100% | 83.33% |
| | 95% CI | [64.58 – 100%] | [100 – 100%] | [100 – 100%] | [100 – 100%] | [100 – 100%] | [70.75 – 100%] |
| | BENCHMARK | * | * | * | * | * | * |

*No benchmark

ESTIMATED PERFORMANCE RATES

NCDB Select Rectum Measures

| | | HEALTHPARTNERS REGIONS | | | HEALTHPARTNERS METHODIST | | |
|--------------------------------------------------------------------------------------------------------------------------------------------------------------------------------------------------------------------------------------------------------------------------------------------------------------------------------------------------------------|-----------|------------------------|--------------|--------------|--------------------------|--------------|--------------|
| | | 2021 | 2020 | 2019 | 2021 | 2020 | 2019 |
| Circumferential Margin is greater than 1 mm from the tumor to the inked, non-serosalized resection margin for Rectal Resections | PR/EPR | 100% | 100% | 100% | 100% | 100% | 100% |
| | 95% CI | [100 – 100%] | [100 – 100%] | [100 – 100%] | [100 – 100%] | [100 – 100%] | [100 – 100%] |
| | BENCHMARK | * | * | * | * | * | * |
| Preoperative chemo and radiation are administered for clinical AJCC T3N0, T4N0, or Stage III; or Postoperative chemo and radiation are administered within 180 days of diagnosis for clinical AJCC T1-2N0 with pathologic AJCC T3N0, T4N0, or Stage III; or treatment is recommended; for patients under the age of 80 receiving resection for rectal cancer | PR/EPR | 100% | 100% | 100% | 100% | 100% | 100% |
| | 95% CI | [100 – 100%] | [100 – 100%] | [65 – 100%] | [100 – 100%] | [100 – 100%] | [100 – 100%] |
| | BENCHMARK | 85% | 85% | 85% | 85% | 85% | 85% |

*No benchmark

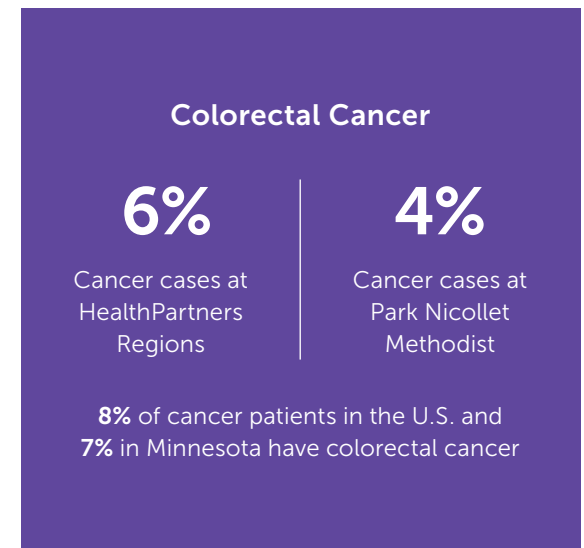
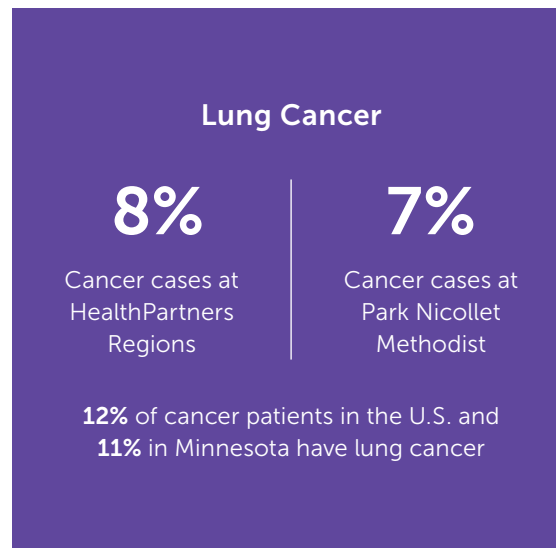
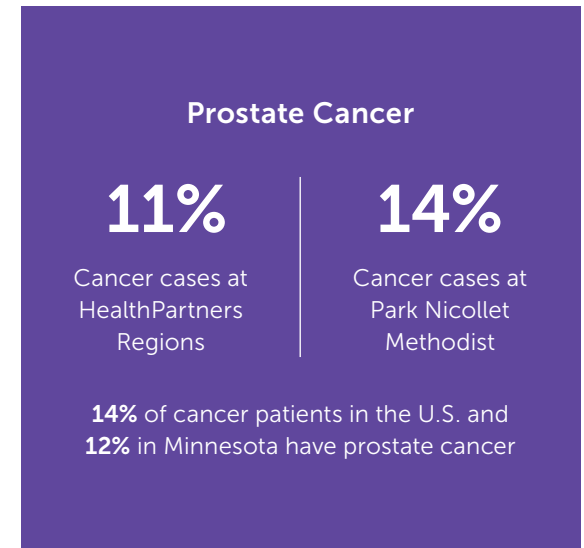
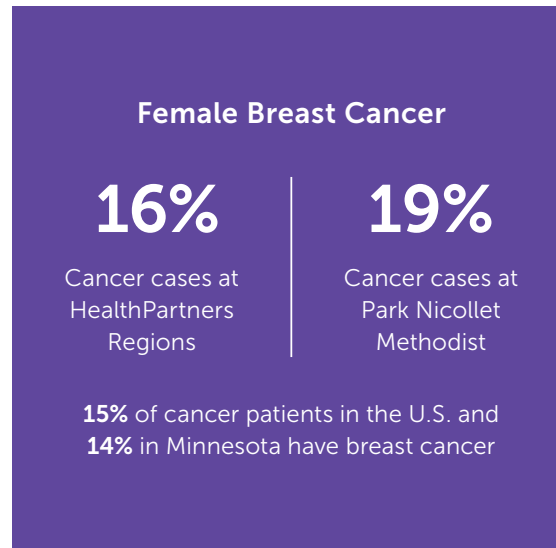
Oncology registry

Most common cancer sites

The four most common cancers for HealthPartners and Park Nicollet patients in 2021 (excluding skin cancers) were breast, prostate, lung and colorectal. These four sites account for 56 percent of all cases.

**TABLE 1:
2021 Four Most Common Cancer Sites**

Table 1 compares, by site and percentage, HealthPartners and Park Nicollet case totals with estimated number of cancer cases in Minnesota and the U.S. according to Cancer Facts & Figures 2022.



**TABLE 2:
2021 Cancer Registry**

HealthPartners Cancer Center at Regions Hospital and HealthPartners Frauentshuh Cancer Center registries contain a comprehensive profile of all newly diagnosed cancer using standards set by the American College of Surgeons.

| | HEALTH PARTNERS REGIONS | | HEALTH PARTNERS FRAUENSHUH | |
|----------------------------------------------------|-------------------------|----------------|----------------------------|----------------|
| | 2020 | 2021 | 2020 | 2021 |
| ANALYTIC CASES (excludes physician office cases)* | 1,692 | 1,836 | 2,783 | 2,557 |
| PERCENTAGE OF CASES PRESENTED AT TUMOR CONFERENCES | 35.4% (598) | 35.1% (637) | 33.9% (949) | 16.4% (417) |

*Analytic: cases diagnosed and/or having initial therapy at HealthPartners Regions or Frauentshuh

**TABLE 3:
2021 Leading Sites of Cancer Incidence**

| CANCER TYPE – MALES | HEALTHPARTNERS REGIONS | | HEALTHPARTNERS FRAUENSHUH | |
|------------------------------|------------------------|----|---------------------------|----|
| | MALE (n=799) | % | MALE (n=1,094) | % |
| PROSTATE GLAND | 148 | 18 | 271 | 25 |
| SKIN (includes non-analytic) | 24 | 3 | 50 | 5 |
| BRONCHUS & LUNG | 90 | 11 | 85 | 8 |
| BLOOD & BONE MARROW | 70 | 9 | 109 | 10 |
| URINARY BLADDER | 55 | 7 | 83 | 7 |
| COLON & RECTUM | 78 | 10 | 77 | 7 |
| KIDNEY | 39 | 5 | 44 | 4 |
| LYMPH NODES | 39 | 5 | 60 | 5 |
| PANCREAS | 26 | 3 | 45 | 4 |
| ESOPHAGUS | 19 | 2 | 24 | 2 |

| CANCER TYPE – FEMALES | HEALTHPARTNERS REGIONS | | HEALTHPARTNERS FRAUENSHUH | |
|-----------------------|------------------------|----|---------------------------|----|
| | FEMALE (n=1,037) | % | FEMALE (n=1,461) | % |
| BREAST | 393 | 38 | 651 | 45 |
| SKIN | 22 | 2 | 51 | 3 |
| BRONCHUS & LUNG | 111 | 11 | 121 | 8 |
| CORPUS UTERI | 73 | 7 | 87 | 6 |
| COLON & RECTUM | 54 | 5 | 74 | 5 |
| BLOOD & BONE MARROW | 48 | 4 | 83 | 6 |
| LYMPH NODES | 34 | 3 | 71 | 5 |
| THYROID GLAND | 30 | 3 | 26 | 2 |
| PANCREAS | 20 | 2 | 27 | 2 |
| OVARY | 20 | 2 | 18 | 1 |
| KIDNEY | 26 | 3 | 24 | 2 |
| URINARY BLADDER | 21 | 2 | 18 | 1 |

Cancer committee members 2022

Our cancer committees meet quarterly to review all aspects of our program. This includes information related to cancer conferences, community outreach, research and quality improvement, as well as all the teams involved in cancer care.

HealthPartners

Daniel Anderson, MD, MPH
Medical Oncology

Kathryn Baxstrom, MD
Medical Oncology

Sue Braaten, RHIT, CTR
Oncology Registry

Benjamin Brasseur, MD
Colorectal Surgeon

E. J. Buckley, MD
Breast Surgeon
(Cancer Liaison Physician,
American College of Surgeons)

Ryan Carlson, MD
Colorectal Surgeon

Linda Christensen-Rengel, NP
Breast Health Center

Christine Colbach, MD
Pathology

Kevin Collis, RN, OCN
Nurse Navigator

Holly Guida, RN-BSN, MBA
Oncology Program Manager

Lauren Gunderson, MS, LGC
Genetic Counselor

Kristin Hanrahan
Quality Improvement

Laura Holasek
Director, Oncology

Peter Hurley, MD
Medical Oncology
Hospital Service Liaison Physician

Balkrishna Jahagirdar, MBBS
Medical Oncology

Michele Lacy, RN, BSN, OCN
Director, Research

Jessica Lane
Mammo A Go-Go Coordinator,
Jane Brattain Breast Center

Pam Mason, MS
American Cancer Society

Michelle Nettesheim
Manager, Hospice and Palliative Care

Gretchen Niemioja, MD
Rehabilitation Services

Pam Pawloski, PharmD, BCOP, FCCP
Sr. Research Investigator

Trisha Prescott, MD
Radiology

Brian Rank, MD
Medical Oncology

Rob Ruff
Pastoral Care

Miguel Ruiz Diaz, MD
Hospice Medical Director

Denise Shannon
Lead Oncology Social Worker

Charles Shideman, MD
Radiation, Oncology

Jane Siekkinen, BS, CTR
Oncology Registry Manager

Lashonda Soma, MD
Radiology

Caroline Sullivan
Manager, Palliative Care

Bonnie Sweeney, RN
Nursing

Daniel Townsend, MD
Medical Director, Palliative Care

Laura Tripp, RD
Food and Nutritional Services

Park Nicollet

E. Belzer, MD
Colon and Rectal Surgery,
Medical Director, NAPRC

Michael Blazar, MD
Medical Oncology
Hospital Service Liaison Physician

Sue Braaten, RHIT, CTR
Oncology Registry

Christopher Chow, MD
Colon and Rectal Surgery

Levi Downs, MD
Gynecology Oncology

Kelly Furda, MD
Radiologist, Jane Brattain Breast Center

Howard Haines, MD
Emergency Medicine

Kristin Hanrahan
Quality Improvement

Megan Hanson, MS, CGC
Genetics

Keith Heaton, MD
General Surgery, Surgical Oncology
(Cancer Liaison Physician,
American College of Surgeons)

Joanna Hill, MBA, CCRP
Research Manager

Laura Holasek
Director, Oncology

Anne Hopkins, RN, OCN
Oncology Program Manager

Lisa Illig, MD
Home Care, Hospice
and Palliative Medicine

Sara Jax, NP
Survivorship Program

Jessica Lane
Mammo A Go-Go Coordinator,
Jane Brattain Breast Center

Pamela Mason, MS
American Cancer Society

Matt McCoy, MD
Pathology

Angela Nelson
Radiology

Sandra Nevinski, BSN, RN
Home Care, Hospice
and Palliative Medicine

Vicki Norton, BSN, OCN, RN
Nursing

Carol Ann Petersen, LICSW, MAHS
Patient Support and Education

Jocelyn Rieder, MD
Urology

Emily Schoh, RN
Nursing

Bryan Schuler, PharmD, BCOP
Pharmacy

Jane Siekkinen, BS, CTR
Oncology Registry Manager

Paul Spilde, PT
Rehabilitation Services

Janet Stark, BCC
Chaplain

Somu Suppiah, MD
Radiation Oncology

Eric Weinberg, MD
Diagnostic Radiology

Mark Wilkowske, MD
Medical Oncology

Alexandra Zimmerman, RD
Food and Nutrition Services

Oncology clinician team

| | | |
|--------------------------------|--------------------------------|--------------------------------|
| Gilberto Almanza, NP-A | Keith Heaton, MD | Cierra McDougall, PA-C |
| Daniel Anderson, MD, MPH | Jason Hoiness, PharmD | Mark Menge, MD |
| Annie Barlow, MPAS, PA-C | Kathryn Houselog, NP-A | Craig Mescher, MD |
| Claudia Bauman, MD | Anna Hughes, PA-C | Kathryn Moore, MD |
| Kathryn Baxstrom, MD | Peter Hurley, MD | Sally Mullany, MD |
| Turang Behbahani, MD | Randy Hurley, MD | Gretchen Niemioja, MD |
| Kacy Berquist, MSN, APRN, NP-C | Lisa Illig, MD | Becky Philipsek, PA-C |
| Michael Blazer, MD | Annie Jacobsen, MD | Laura Pillsbury, PA-C |
| Joel Carter, MD | Jeffrry Jaffe, MD | Karen Rabenau, MD |
| Cathleen Chen, MD | Balkrishna Jahagirdar, MBBS | Brian Rank, MD |
| Kurt Demel, MD | Sarah Jax, NP-AGPC | Anne Reiber, ANP, GNP |
| Christine Ding, MD | Kathryn Jelle, PA-C | Melissa Sherman, MD |
| Levi Downs, MD | Yan Ji, MD | Charles Shideman, MD |
| Dave Drone, PharmD | Brittney Marie Joachim, NP-F | Amy Spomer, MD |
| Arkadiusz Dudek, MD, PhD | Khalid Ali Kambal, MB BCH | Somu Suppiah, MD |
| Kaitlin Durkin, DNP-AGAC | Elana Knack, MD | Deanna Teoh, MD |
| Mary Ehresman, FNP, ADCN | Bhaskar Kolla, MD | Wael Toama, MD |
| Kristen Engstrom, NP-AGPC | Stephanie Kroon, PA-C | Kandice Tolic, NP-WH |
| Kelsa Evans, PA-C | Kendra Kubiak, MD | Jayanthi Vijayakumar, MBBS, MS |
| Brad Farrell, PharmD | Priya Kumar, MBBS | Punit Wadhwa, MBBS |
| Lori Fewer, CFNP | Lisa Lafranchi, PA-C | Kimberly Walsh, APRN, CNP |
| Chitra Ganesan, MBBS | Brenda Larson, MD | Mark Wilkowske, MD |
| Colton Gits, MD | Rachel Lerner, MD | Kelly Young, DNP-F |
| Warren Goodman, MD | Adrienne Mallen, MD | Dylan Zylla, MD, MS |
| Michael Haley, DO | Sarah Manuels, MPAS, PA-C, MPH | |
| Robert Haselow, MD | Steven McCormack, MD | |



Training the next generation of oncologists

One of the core missions of our organization is to train the next generation of physicians and scientists to be leaders in the field of oncology. Regions Hospital is proud to host a clinical training site for the University of Minnesota Hematology and Oncology Fellowship Program. For more than 25 years, this training has included direct supervision of patient care, didactic lectures and informational teaching sessions. Each year, more than 50 hours of didactic lectures are provided to University of Minnesota medical students, internal medicine residents, hematology-oncology fellows, primary care and emergency room physicians, oncology nurses and pharmacists.

New and returning clinicians in 2022

- Colton Gits, MD
- Kathryn Houselog, NP-A
- Brittney Marie Joachim, NP-F
- Stephanie Kroon, PA-C
- Becky Philipsek, PA-C
- Laura Pillsbury, PA-C
- Wael Toama, MD

Leadership in professional organizations

Minnesota Society of Clinical Oncology

We provide leadership and support to the Minnesota Society of Clinical Oncology. This group works to provide advocacy for patients with cancer and promote standards of excellence for high-quality cancer care.

Secretary/Treasurer: **Peter Hurley, MD**

Chair, Education Programs:
Balkrishna Jahagirdar, MD

Member-at-Large: **Yan Ji, MD**

Member-at-Large: **Rachel Lerner, MD**

Membership Liaison: **Sarah Jax, APRN, AOCNP**

Alliance for Clinical Trials in Oncology

This group develops and conducts clinical trials, as well as research methods to alleviate side effects of cancer and cancer treatments.

Executive Committee Member, Principal Investigator, Board Member and Co-Chair, Community Oncology Committee, Trustee of Alliance Foundation: **Daniel Anderson, MD, MPH**

Member and Co-Chair, Experimental Therapeutics Committee and four national trials:
Balkrishna Jahagirdar, MD

Respiratory Committee: **Arkadiusz Dudek, MD**

Respiratory Committee, Community Oncology Committee: **Yan Ji, MD**

Other leadership roles

Chinese American Hematologist and Oncologists Network

Bridging cancer care, education and research between China and the U.S.

Lifetime Member: **Yan Ji, MD**

Cancer Legal Care

This nonprofit engages the law to resolve complex challenges facing people and communities affected by cancer.

Board Member: **Amy Spomer, MD**

A Breath of Hope (ABOH) Lung Foundation

ABOH fights lung cancer by funding innovative United States lung cancer research, raising awareness and supporting patients with lung cancer and their families.

Board Member: **Yan Ji, MD**

Hoosier Cancer Research Network

An independent, nonprofit contract research organization (CRO) that specializes in early phase, multi-center, investigator-initiated oncology clinical trials.

Thoracic Working Group, Genitourinary Cancer Working Group, Skin Cancer Working Group:
Arkadiusz Dudek, MD, PhD

Midwest Melanoma Partnership

This multi-institutional collaboration is dedicated to the development of improved therapies for patients with malignant melanoma.

Chair, Board of Directors:
Arkadiusz Dudek, MD, PhD

National Cancer Institute's Community Oncology Research

This organization is the nation's leader in cancer research.

GI Cancer Steering Committee:
Arkadiusz Dudek, MD, PhD

Regions Hospital Foundation

We work in partnership with our members, patients and community to improve health and well-being.

Board Member and Chair, Cancer Subcommittee:
Balkrishna Jahagirdar, MD

HealthPartners Institute graduate medical education

We partner with the University of Minnesota Medical School and other medical schools to offer clinical courses and specialized fellowship training.

Site Director, Hematology-Oncology Fellowship Program and Internal Medicine Hematology-Oncology rotation at Regions Hospital:
Balkrishna Jahagirdar, MD

Give hope. Give possibility.

Through Regions Hospital Foundation and Park Nicollet Foundation, 742 donors gave nearly \$1.6 million in 2022 to support those affected by cancer at HealthPartners Cancer Center at Regions Hospital and HealthPartners Frauenthuh Cancer Center.

Your generous gifts support:

- Basic needs assistance
- Care navigation assistance
- Classes and support groups
- Clinical cancer research
- Integrative therapies including music and massage therapy
- Non-moving patient care model
- Survivorship programming

Be a part of our mission in action



Donate at parknicollet.com/give
Contact us at foundation@parknicollet.com



Donate at regionshospital.com/donate
Contact us at rhf@healthpartners.com

When BettyAnn was diagnosed with cancer, she was completely blindsided. Thanks to Tara, BettyAnn's nurse navigator, she was not alone. Tara patiently answered BettyAnn's questions, thoughtfully explaining every procedure and instruction – she even helped with scheduling and appointment reminders.



"When people are in such a state of distress, to know that you have one person means the world."

BettyAnn

HealthPartners Institute

Advancing health and well-being through research and education

We are research and education together at HealthPartners. We conduct hundreds of research studies each year to improve lives. We also support clinical learning at HealthPartners through the training of many health professionals. We are a member of the national Cancer Research Network and offer unique and novel therapies through an early phase therapeutics program using the newest investigational drugs available for research. Through clinical trials, we support patients with cancer in our community and contribute to life-changing science around the world.

For more information, visit healthpartners.com/institute



To make an appointment in the metro area, call **612-341-4800**.

To make an appointment in greater Minnesota, call **320-484-4695**.

For more information or to make a referral, contact Laura Holasek at laura.holasek@parknicollet.com or **651-254-4656**.

healthpartners.com/cancer