

2021 ONCOLOGY ANNUAL REPORT



PARK NICOLLET FRAUENSHUH CANCER CENTER
REGIONS HOSPITAL CANCER CARE CENTER
PARK NICOLLET CLINIC & SPECIALTY CENTER - BURNSVILLE
PARK NICOLLET CLINIC & SPECIALTY CENTER - MAPLE GROVE
HUTCHINSON HEALTH CANCER CENTER
LAKEVIEW HOSPITAL CANCER CARE - STILLWATER



Cancer care locations

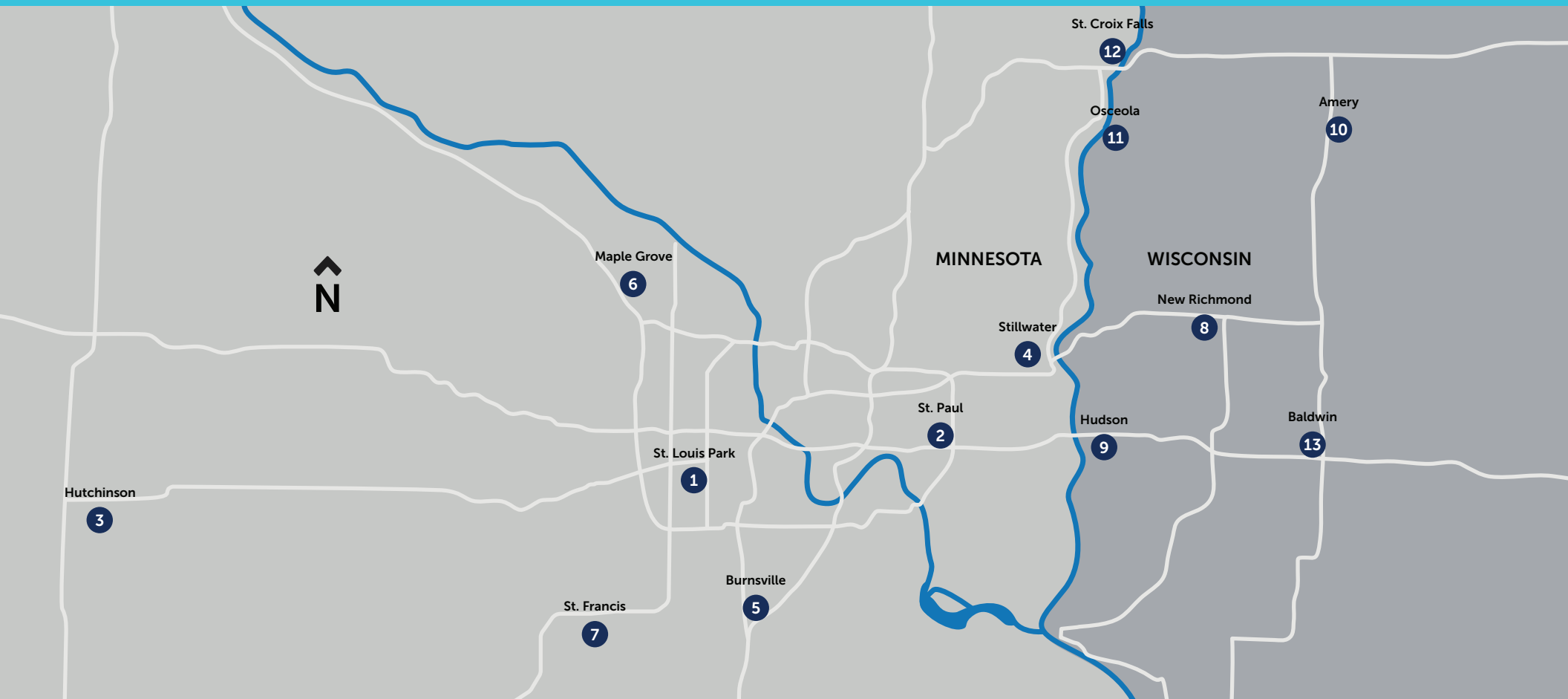
Minnesota

1. Park Nicollet Frauenshuh Cancer Center
2. Regions Hospital Cancer Care Center
3. Hutchinson Health Cancer Center
4. Lakeview Hospital Cancer Care – Stillwater
5. Park Nicollet Clinic & Specialty Center – Burnsville (Infusion Center)
6. Park Nicollet Clinic & Specialty Center – Maple Grove (Infusion Center)
7. St. Francis Cancer Center*

Wisconsin

8. Westfields Hospital – Cancer Center of Western Wisconsin*
9. Hudson Hospital – Cancer Center of Western Wisconsin*
10. Amery Hospital and Clinic – Cancer Center of Western Wisconsin*
11. Osceola Medical Center – Cancer Center of Western Wisconsin*
12. St. Croix Regional Medical Center – Cancer Center of Western Wisconsin*
13. Western Wisconsin Health – Cancer Center of Western Wisconsin*

*HealthPartners provides physician services in partnership with these locations



Timely, expert care for our patients

Providing safe, high-quality care to our patients has remained a priority, despite the ongoing challenge of COVID-19. We understand that a cancer diagnosis, complicated by a pandemic, can be overwhelming for patients. We continuously review every aspect of our care to ensure that our patients receive the services they need while minimizing exposure to the virus.

With new protocols in place, essential, in-person visits for our patients have continued. Whenever possible, video visits have allowed patients to receive personalized care from home. Integrated therapies that positively impact patients, like our nationally recognized music therapy program, have resumed with modifications. Partnering with our patients, we've also identified ways to stay safe in the community. The result has been cancer care that has felt safe and effective for patients and our colleagues.

Timely, expert care continues to be a priority for patients dealing with the uncertainty of a cancer diagnosis. Our 48-hour promise offers an appointment with an oncologist within 48 hours of a diagnosis. That means questions are answered quickly and a personalized treatment plan can begin immediately.

Our clinicians are dedicated to using scientific advances to improve the lives of our patients. That's why we created the Cancer Research Center to further our understanding of cancer care. We offer a full spectrum of cancer clinical

trial opportunities, from early phase to more developed options. Our patients have access to the latest treatment options close to home, without the potential health risks of traveling to distant cities.

Our program has continued to grow over the past year. We've expanded our services at Regions Hospital, Park Nicollet Clinic & Specialty Center – Burnsville, and at St. Francis Medical Center, a regional partner. Through our network of clinics and hospitals, we treat more than 15% of all new cancer cases in Minnesota with high quality, compassionate care, whether you're in Hutchinson, St. Paul or Amery, Wisconsin.

Our commitment to providing the best care possible is demonstrated through our certification by the American College of Surgeons' Commission on Cancer and participation in the American Society of Clinical Oncology's Quality Oncology Practice Initiative (QOPI).

In 2022, we will remain committed to providing the highest quality treatment and personalized services. We want to make it as simple as possible to access this care. One of the ways we will do this is by changing our name to HealthPartners – making it easier for patients to find us.

This report highlights our ongoing work in caring for patients diagnosed with cancer. Please contact us if you have questions about this report or the care we offer.



Daniel Anderson, MD, MPH
Medical Director
Regions Hospital Cancer Care Center
daniel.m.anderson@healthpartners.com



Mark A. Wilkowske, MD
Medical Director
Park Nicollet Frauenshuh Cancer Center
mark.wilkowske@parknicollet.com



Laura Holasek
Administrative System Director
Oncology Services
laura.holasek@parknicollet.com



ASCO'S QOPI CERTIFICATION



Commission
on Cancer®

Highlights of 2021

Record enrollment for early phase therapeutics program

In 2021, the Cancer Research Center early phase therapeutics program (phase 1) expanded trial opportunities and enrolled more patients than ever before. This was notable since many other cancer research programs paused enrollment due to COVID-19.

Since its inception in 2016, the program has offered 46 different clinical trials to our patients. Many of these trials are open to patients with any cancer diagnosis, providing our patients with a variety of opportunities to participate.

We've offered 46 different early phase clinical trials to our patients.

As part of that trial menu, we launched a new study for uveal melanoma using a combination of two experimental drugs, PAC-1 and Entrectinib. The goal was to find the most effective doses with the least number of side effects in patients who have metastatic uveal melanoma. This national study, led by our program, is one of only three available studies for this disease in the Midwest. The first dose level has proven to be safe. We will start enrolling patients on the second dose level in early 2022.

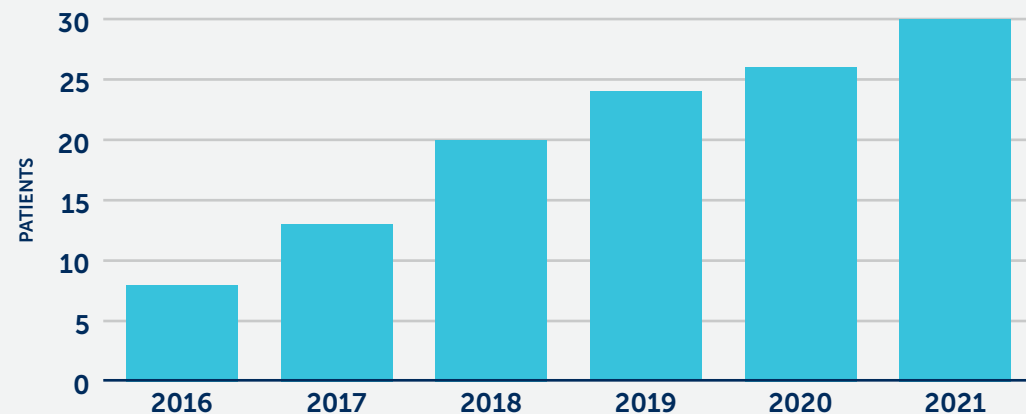
In addition, our program participated in a pilot project led by American Society of Clinical Oncology (ASCO) and Association of Community Cancer Centers (ACCC) to promote the benefits of diversity in clinical trials. We were one of 75 research sites across the country invited to participate in an implicit bias training developed by ACCC aimed at reducing barriers to clinical research opportunities. We also piloted a

self-assessment tool from ASCO intended to improve policies, procedures and programs that may inadvertently hinder participation in trials. The tools and knowledge gained are now helping us develop a plan to enhance our diversity, equity and inclusion efforts.

The early phase therapeutics program is generously supported through contributions from individuals and community partners.

Early phase therapeutics accrual

Enrollment increased each year since 2016.



Expanding our services

Regions Hospital opened new infusion center

In 2021, Regions Hospital Cancer Care Center received permission to expand infusion services to a new location on the hospital campus. The improved space will enhance the patient experience with spacious, private infusion rooms with many featuring large windows. Having access to sunlight and nature creates a healing environment during chemotherapy. Elements of the non-moving patient care model will be integrated into an improved experience for our patients. Instead of rushing between locations for services, care will come directly to patients, helping conserve energy for the things they love to do.

Park Nicollet Clinic Specialty Center – Burnsville added infusion services

As part of the expansion of Park Nicollet Specialty Center – Burnsville, we increased oncology and infusion services in spring 2021 through a continued partnership with Park Nicollet Rheumatology. The infusion center provides expanded exam and infusion space to meet the needs of patients in Burnsville and surrounding communities.

St. Francis updated and expanded

St. Francis Regional Medical Center in Shakopee is part of our extended network of care. Located in a fast-growing area of the Twin Cities, the demand for cancer care is increasing. The infusion space was recently remodeled, including adding windows for natural light. The new clinic also offers expanded space and enough exam rooms to meet future needs.



Music therapy internship program

Our nationally recognized music therapy has positively impacted countless patients. An important component of the program is our music therapy internship program at Park Nicollet. This year, the program added Regions Hospital as an additional training site for interns. We also became a nationally approved internship program in 2021 through the American Music Therapy Association (AMTA).

New clinicians

- Gilberto Almanza, NP-A
- Claudia Bauman, MD
- Kaitlin Durkin, DNP-AGAC
- Anna Hughes, PA-C
- Annie Jacobsen, MD
- Elana Knack, MD
- Bhaskar Kolla, MD
- Kimberly Walsh, APRN, CNP

Highlights of 2021

Dylan Zylla, MD, is Young Physician Leadership Award recipient

Congratulations to Dylan Zylla, MD, MS, recipient of Park Nicollet Foundation's 2021 Bill Richards, MD, Young Physician Leadership Award. The award was established in 2014 to honor the memory of Dr. Richards to inspire and reward physicians in practice for fewer than 10 years who demonstrate leadership and innovation in care.

Dr. Zylla practices oncology and serves as medical director of the Cancer Research Center. In 2020, he created the Cannabis in Cancer Research and Education (CanCaRE) Clinic, where he provides virtual cannabis education consultations for patients with cancer across HealthPartners.

Dr. Zylla's colleagues describe him as being passionate about improving the quality of life for patients living with cancer. Some of his most innovative achievements include:

- Research focused on the impact of opioid use in patients with cancer
- Conducting novel studies to better understand the role of medical cannabis in cancer treatment plans
- Collaborating with the International Diabetes Center to improve diabetes management in patients receiving steroids with chemotherapy
- Implementing electronic patient-reported outcomes to track cancer-related symptoms using surveys in Epic



Dylan Zylla, MD, MS



Training the next generation of oncologists

One of the core missions of our organization is to train the next generation of physicians and scientists to be leaders in the field of oncology. Regions Hospital is proud to host a clinical training site for the University of Minnesota Hematology and Oncology Fellowship Program. For more than 25 years, this training has included direct supervision of patient care, didactic lectures and informational teaching sessions. Each year, more than 50 hours of didactic lectures are provided to University of Minnesota medical students, internal medicine residents, hematology-oncology fellows, primary care and emergency room physicians, oncology nurses and pharmacists.

Brian Rank, physician leader, returns to his roots

After more than 25 years in HealthPartners leadership, Brian Rank, Co-Executive Medical Director, plans to step down from his role at the end of 2021. However, that doesn't mean that he's leaving the organization.

Dr. Rank has been an oncologist since the 1980s and has maintained a practice throughout his time as a physician leader. He will continue as an oncologist, providing care for his patients, including some who have been with him up to 40 years. Dr. Rank is known for his knowledge, humility, compassion and wonderful sense of humor. The partnerships that he builds with his patients are strong, according to his colleagues. When asked about his work, he brushed aside compliments and expressed appreciation for the opportunity to "guide patients through a complex, often-times scary landscape."

Known for keeping the best interests of patients at the forefront of care, Dr. Rank has earned the continual respect of his colleagues. He was a strong advocate of the combination between HealthPartners and Park Nicollet in 2013. When asked about his thoughts on the merging of groups, he said, "I always ask if a change will result in better care. Will it improve outcomes in terms of health, patient experience, team experience and cost?" That thoughtful approach helped the combination become a reality. When meeting with the Park Nicollet board of directors to discuss a combination, Mark Wilkowske, MD, vividly remembers Dr. Rank's impact on the group.

"He reflected upon the opportunities for the future and he took on every one of our questions with respect and an effort to answer them as well as possible." That day, he convinced the board to take the next step in the process.

Dr. Rank believed the cultures between the two organizations were similar and it would create synergy, which proved to be accurate. Looking specifically at how the combination impacted the cancer program, he shared, "The level of expertise and the depth of oncology care is astounding." He credits his colleagues for being great teachers, researchers and caregivers who learn from others and support each other.

Dr. Rank approaches his work with deep humility and gratitude.

As a leader, Dr. Rank has led some of our organization's most important work. He helped build effective collaborations in our region, strengthened our clinician culture, improved health equity and mentored new clinicians. He has made remarkable contributions as a physician leader, oncologist and colleague.



Brian Rank, MD

He's enthusiastic about continuing to practice and optimistic about advances he sees in the field of oncology. "I remember when people needed to carry their X-rays and scans with them to their appointments," he recalled. Today, Dr. Rank predicts a continued trajectory of improvements in the field. "I see more patient-centered care across teams, from prevention and early detection to treatment, palliative care and hospice care." In the next 15-20 years, he's hopeful that we'll understand the mechanisms for most cancers. From there, we can develop specific therapies and decrease toxicity to help people live longer and more normal lives.

HealthPartners and Park Nicollet are grateful to Dr. Rank for his many contributions as a physician leader. Moving forward, he will continue practicing oncology and inspiring members of our team.

Community awareness and support

We're actively involved in programs to increase cancer screenings, community awareness and support for patients with cancer.

Caring for patients by video, phone and in person

We support our patients' health and well-being with in-person, phone and video visits. With new COVID-19 protocols in place, essential, in-person visits for our patients continued in 2021. We also expanded access to personalized care from home with 5,315 video visits in 2021.

We expanded access to care with 5,315 video visits in 2021.

Help with basic needs

Assistance with everyday needs such as transportation, food and gas can be vital to patients and their families during treatment. Strong partnerships with area organizations including American Cancer Society, A Breath of Hope (ABOH), Angel Foundation, Open Arms of Minnesota and Pathways made it possible to offer personalized help.

Integrated, healing therapies

Integrated therapies such as massage, music therapy, pet therapy and spiritual care can improve patients' overall well-being before, during and after treatment.

- **Music therapy program** – Our highly acclaimed program expanded to Regions Hospital Cancer Care Center in 2021. The hospital became an additional training site for interns, a program approved by the American Music Therapy Association (AMTA).
- **Massage therapy** – Plans are underway to expand massage therapy services in 2022 to Park Nicollet Clinic & Specialty Center – Burnsville.
- **Pet therapy** – In select locations, volunteers returned to infusion rooms in 2021 to comfort patients.

Brain cancer support group

At our brain tumor support group, patients and families can virtually meet to share their feelings and concerns. The group strives to provide a sense of belonging, safety and courage to those affected by a brain tumor.

Lung cancer support group

This virtual, monthly group at Regions Hospital provides an opportunity for patients with lung cancer to connect. There's a sense of empowerment and belonging when meeting others with a similar cancer diagnosis. As a patient shared, "It's just so different to be with people who are really walking in the same shoes." This support group is sponsored by A Breath of Hope.



Kevin Collis, RN, OCN, preparing for ABOH's Annual Walk/Run

A Breath of Hope Lung Foundation

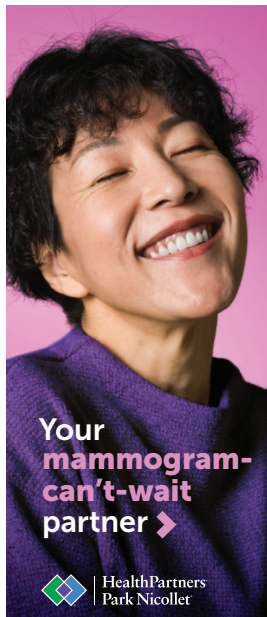
This organization fights lung cancer by funding innovative research, raising awareness and supporting patients and families. We're fortunate to have A Breath of Hope support our lung cancer support group as well as other educational opportunities for our patients, including:

- **Annual Walk/Run** – Aug. 14, 2021 event in Minneapolis (15th annual celebration)
- **Lung Cancer Patient Summit** – Nov. 6, 2021 event in Minneapolis (patient education, advocacy and networking)

Screening and prevention

Be Pink and breast cancer awareness

Be Pink encourages women in the Twin Cities to be aware, proactive and empowered with their breast health, including screenings and early breast cancer detection.



After a decrease in breast exams and mammogram appointments due to the pandemic, a new organization-wide initiative sought to reverse this trend. A marketing campaign encouraged women who qualified for a screening to schedule one. Our appointment scheduling process was simplified with new online capabilities, more same-day appointments and scheduling without

referrals or clinician orders. This initiative will continue into 2022.

Mammo a-go-go is a mobile mammography unit that visits local communities and events to make getting a mammogram easy. We've found that people feel safe going into our two vehicles for a screening, even during the pandemic. After closing down for a short period, the number of women served has rebounded. Over 1,000 women across Minnesota were screened in their local communities in 2021.

Be Pink continues as a beacon of hope for many. Each year, we help thousands of local women in need receive mammograms, diagnostic services and breast health education. Park Nicollet Foundation's annual Be Pink events raised funds in support of Park Nicollet Jane Brattain Breast Center's Mammo a-go-go Community Outreach Program. The October events were a huge success that helped to raise over \$161,000.

Colorectal cancer screening

There was also a notable decrease in the number of people scheduling colonoscopies during the pandemic. A marketing campaign promoted appointments and educated the public on the importance of cancer screenings. It included billboards, print ads, email and social media that reached hundreds of thousands of people. As a result, 688 people scheduled colonoscopies. To reach even more patients, we mailed FIT tests to those who hadn't been screened and met certain qualifications. FIT tests are an in-home stool sample kit that can be used as a screening.

We continued our partnership with Sage, Minnesota's cancer screening program for low-income residents. More than 850 patients were scheduled in 2021.



**Everyone welcome,
included and valued**

Community well-being initiatives

HealthPartners has a long history of promoting health and well-being in our communities through a variety of initiatives. In 2021, we focused on reducing health care disparities and engaging with communities to address social factors that affect health, such as education, housing and access to food.

Preventive screenings – We're working to eliminate gaps in screenings to help prevent more serious illnesses and health conditions. For example, because we offer access to same-day mammograms, women can get their annual breast exam while already in our hospitals and clinics for another appointment.

Language services – When patients don't understand aspects of their care, it affects health outcomes. We offer language interpreters for several languages to ensure our patients who speak English as a second language, or speak no English, have the best care possible.

Mental health – People want to feel like their identity is understood by their care team. That's why HealthPartners uses an online tool that can identify mental health doctors and clinicians by language, race, ethnicity, gender and sexual orientation.

Education and research

Critical to our mission of helping patients with cancer is our engagement in education and research. Teaching and education ensure our clinicians and care teams keep pace with new discoveries in the diagnosis and treatment of cancer. Research, through participation in clinical trials, gives our patients access to new therapies.

We're also taking a leading role in local research by developing an early phase therapeutics program (EPTP) at Regions Hospital. We offer a variety of clinical trials at all our facilities that not only prevent and treat cancer, but also treat symptoms and side effects of cancer therapies. The Metro-Minnesota Community Oncology Research Consortium (**mmcorc.org**) is a nonprofit research consortium of 23 local hospitals and clinics, which provides people in our community access to the newest therapies available for cancer treatment and prevention through national cancer clinical trials. HealthPartners and Park Nicollet are active partners within the research consortium, which is administered by HealthPartners Institute. Physicians Dan Anderson, MD, MPH, and Richard Peterson, MD, provide consortium leadership as the principal investigator and assistant principal investigator.

For more information on our Cancer Research Center, visit healthpartners.com/institute.

Select publications

Bishop JR, Huang RS, Brown JT, Mroz P, Johnson SG, Allen JD, Bielinski SJ, England J, Farley JF, Gregornik D, Giri J, Kroger C, Long SE, Luczak T, McGonagle EJ, Ma S, Matey ET, Mandic PK, Moyer AM, Nicholson WT, Petry N, **Pawloski PA**, Schlichte A, Schondelmeyer SW, Seifert RD, Speedie MK, Stenehjem D, Straka RJ, Wachtl J, Waring SC, Ness BV, Zierhut HA, Aliferis C, Wolf SM, McCarty CA, Jacobson PA. Pharmacogenomics education, research and clinical implementation in the state of Minnesota. *Pharmacogenomics*. 2021 Jul;22(11):681-691. doi: 10.2217/pgs-2021-0058. Epub 2021 Jun 17. PubMed PMID: 34137665; PubMed Central PMCID: PMC8265281.

Bulkley JE, McMullen CK, Rawlings AM, Krouse RS, Francisco MC, Sterrett AT, Burnett-Hartman AN, **Pawloski PA**, Corley DA, Colwell JC, Feigelson HS. The association of bowel function, participation in life activities, and quality of life in rectal cancer survivors. *Qual Life Res*. 2021 Jul 12;. doi: 10.1007/s11136-021-02930-1. [Epub ahead of print] PubMed PMID: 34251589.

Buras AL, **Mallen A**, Wenham R, Montejo M. Stage IIIC endometrial cancer review: Current controversies in adjuvant therapy. *Gynecologic Oncology Reports*, Volume 36, 2021, 100754, ISSN 2352-5789. <https://doi.org/10.1016/j.gore.2021.100754>.

Forde PM, Anagnostou V, Sun Z, Dahlberg SE, Kindler HL, Niknafs N, Purcell T, Santana-Davila R, **Dudek AZ**, Borghaei H, Lanis M, Belcaid Z, Smith KN, Balan A, White JR, Cherry C, Ashok Sivakumar IK, Shao XM, Chan HY, Singh D, Thapa S, Illei PB, Pardoll DM, Karchin R, Velculescu VE, Brahmer JR, Ramalingam SS. Durvalumab with platinum-pemetrexed for unresectable pleural mesothelioma: survival, genomic and immunologic analyses from the phase 2 PRE0505 trial.

Guggisberg J, Schumacher M, **Gilmore G**, **Zylla DM**. Cannabis as an Anticancer Agent: A Review of Clinical Data and Assessment of Case Reports. *Cannabis Cannabinoid Res*. 2021 Aug 7;. doi: 10.1089/can.2021.0045. [Epub ahead of print] PubMed PMID: 34370591.

Hensing TA, Wang X, Stinchcombe TE, Gao J, Knopp TV, Watson M, **Dudek AZ**, Graziano SL, Patel JD, Faller BA, Dragnev KH, Kozono D, Vokes EE/ Alliance Foundation Trial 09: A Randomized, Multicenter, Phase 2 Trial Evaluating Two Sequences of Pembrolizumab and Standard Platinum-Based Chemotherapy in Patients With Metastatic NSCLC. *JTO Clinical and Research Reports*, Volume 2, Issue 8, 2021, 100208, ISSN 2666-3643, <https://doi.org/10.1016/j.jtocrr.2021.100208>.

Mendelsohn AB, Marshall J, McDermott CL, **Pawloski PA**, Brown JS, Lockhart CM. Patient Characteristics and Utilization Patterns of Short-Acting Recombinant Granulocyte Colony-Stimulating Factor (G-CSF) Biosimilars Compared to Their Reference Product. *Drugs Real World Outcomes*. 2021 Jun;8(2):125-130. doi: 10.1007/s40801-021-00228-9. Epub 2021 Jan 30. PubMed PMID: 33517548; PubMed Central PMCID: PMC7847294.

Pawloski PA, McDermott CL, Marshall JH, Pindolia V, Lockhart CM, Panozzo CA, Brown JS, Eichelberger B. BBCIC Research Network Analysis of First-Cycle Prophylactic G-CSF Use in Patients Treated With High-Neutropenia Risk Chemotherapy. *J Natl Compr Canc Netw*. 2021 Aug 16;. doi: 10.6004/jnccn.2021.7027. [Epub ahead of print] PubMed PMID: 34399406.

Pocobelli G, Dublin S, Bobb JF, Albertson-Junkans L, Andrade S, Cheatham TC, Salgado G, Griffin MR, Raebel MA, Smith D, Li DK, **Pawloski PA**, Toh S, Taylor L, Hua W, Horn P, Trinidad JP, Boudreau DM. Prevalence of prescription opioid use during pregnancy in eight US health plans during 2001-2014. *Pharmacoepidemiol Drug Saf*. 2021 Nov;30(11):1541-1550. doi: 10.1002/pds.5312. Epub 2021 Jul 7. PubMed PMID: 34169607.

Shahriar AA, Vazquez Benitez G, **Pawloski PA**, Dehmer SP, Alpern JD. Characteristics of State Legislation Addressing Prescription Drug Price Increases in the United States, 2020. *J Gen Intern Med*. 2021 May 28;. doi: 10.1007/s11606-021-06838-x. [Epub ahead of print] PubMed PMID: 34047918. Monitoring Rates of Malnutrition Risk in Outpatient Cancer Centers Utilizing the Malnutrition Screening Tool Embedded into the Electronic Health Record.

Sinicrope FA, Shi Q, Smyrk TC, Goldberg RM, Cohen SJ, Gill S, Kahlenberg MS, Nair S, Shield AF, **Jahagirdar BN**, Jacobson SB, Foster NR, Pollak MN, Alberts SR. Association of Adiponectin and Vitamin D With Tumor Infiltrating Lymphocytes and Survival in Stage III Colon Cancer. *JNCI Cancer Spectr*. 2021 Jul 23;5(5):pkab070. doi: 10.1093/jncics/pkab070. eCollection 2021 Oct. PMID: 34485815.

Skinner H, Hu C, Tsakiridis T, Santana-Davila R, Lu B, Erasmus JJ, Doerner AJ, Videtic GMM, Coster J, Yang AX, Lee RY, Werner-Wasik M, Schaner PE, **McCormack SE**, Esparaz BT, McGarry RC, Bazan J, Struve T, Paulus R, Bradley JD. Addition of Metformin to Concurrent Chemoradiation in Patients with Locally Advanced Non-Small Cell Lung Cancer: The NRG-LU001 Phase 2 Randomized Clinical Trial. *JAMA Oncol*. 2021 Sep 1;7(9):1324-1332. doi: 10.1001/jamaoncol.2021.2318. PMID: 34323922.

Trujillo EB, **Shapiro AC**, Stephens N, Johnson SJ, Mills JB, Zimmerman AR, Spees CK. J Monitoring Rates of Malnutrition Risk in Outpatient Cancer Centers Utilizing the Malnutrition Screening Tool Embedded into the Electronic Health Record. *Acad Nutr Diet*. 2021 May;121(5):925-930. doi: 10.1016/j.jand.2020.11.007. Epub 2020 Dec 11. PMID: 33309592.

Zylla DM, **Eklund J**, **Gilmore G**, **Gavenda A**, **Guggisberg J**, **Vazquez-Benitez G**, **Pawloski PA**, Arneson T, Richter S, Birnbaum AK, Dahmer S, Tracy M, **Dudek A**. A randomized trial of medical cannabis in patients with stage IV cancers to assess feasibility, dose requirements, impact on pain and opioid use, safety, and overall patient satisfaction. *Support Care Cancer*. 2021 Dec;29(12):7471-7478. doi: 10.1007/s00520-021-06301-x. Epub 2021 Jun 4. PubMed PMID: 34085149.

Select trials

18-BI-1206-03: Phase 1/2a Clinical Trial of BI-1206, a Monoclonal Antibody to CD32b (FcγRIIB), in Combination with Pembrolizumab in Subjects with **Advanced Solid Tumors** Previously Treated with Anti-PD1 or Anti-PDL1 Antibodies

ACT FAST 2018-07: Blood and Stool Sample Collection in Subjects with a Diagnosis of Colorectal Cancer or Colorectal Lesion

ALK4230-001: A Phase 1/2 Study of ALKS 4230 Administered Subcutaneously as Monotherapy in Combo with Pembro in Subjects with **Advanced Solid Tumors** (ARTISTRY-2)

ALKS 4230-006: Phase 2 Study of ALKS 4230 Administered Subcutaneously as Monotherapy in Patients with **Advanced Melanoma** Who Have Previously Received anti-PD-[L]1 Therapy – ARTISTRY-6

ARRAY 818-103: A Sequential 2-arm, Open-label Phase 1 Study to Evaluate Effects of Encorafenib in Combo with Binimetinib on the PKs of Losartan, Midazolam, Caffeine, Omeprazole, and Dextromethorphan Administered in a Cocktail Approach and on the PKs of Rosuvastatin in Patients with **BRAF V600-mutant Unresectable or Metastatic Advanced Solid Tumors**

ASTX295-01: Phase 1/2 Open-Label Study of the Safety, Pharmacokinetics, and Preliminary Activity of ASTX295 in subjects with **Wild-Type TP53 Advanced Solid Tumors**

CBY719H12301: Alpelisib Plus Nab-paclitaxel in Patients with Advanced **Triple-Negative Breast Cancer** with *PIK3CA* Mutation or *PTEN* Loss without *PIK3CA* Mutation (EPIK-B3)

Connect MDS and AML: The Myelodysplastic Syndromes (MDS) and Acute Myeloid Leukemia (AML) Disease Registry

Destiny-07: A Phase 1b/2 Multicenter, Open-label, Dose Expansion Study to Explore the Safety, Tolerability, and Anti-tumor Activity of Trastuzumab Deruxtecan (DC 8201a, T-DXd) Monotherapy and Combination in Patients with **Metastatic HER2-Positive Breast Cancer**

Destiny-08: A Phase 1b Multicenter, Open-label, Dose-Finding and Expansion Study to Explore the Safety, Tolerability, Pharmacokinetics and Anti-tumor Activity of Trastuzumab Deruxtecan (DS 8201a, T-DXd) in Combination with Other Anti-cancer Agents in Patients with **Metastatic HER2-low Breast Cancer**

DF6002-001: A Phase 1/2, First-In-Human, Multi-Part, Open-Label, Multiple-Ascending Dose Study to Investigate the Safety, Tolerability, Pharmacokinetics, Biological, and Clinical Activity of DF6002 as a monotherapy and in combination with Pembro in Patients with **Locally Advanced or Metastatic Solid Tumors**, and Expansion in Selected Indications

Exact Sciences 2018-01 & 2018-01B: Blood and Stool Sample Collection to Evaluate Biomarkers in Subjects with Untreated Solid Tumors (breast, lung, prostate, bladder, uterine, kidney/renal pelvis, pancreatic, liver, stomach, ovarian, esophageal)

HC-404-FCP-2011: A Multicenter, Open-label, Phase 1a Study of HC-5404-FU in Subjects with Selected, Advanced Solid Tumors (**RCC – clear or papillary, gastric adenocarcinoma, HER2+ MBC, SCLC**)

LUN 15-299: Phase 2 Study of Nivolumab + Ramucirumab for Patients with **Previously-Treated Mesothelioma**

LUN 18-357: Induction Durvalumab Followed by Chemoradiation and Consolidation Durvalumab (MEDI4736) for **Stage III Non-small Cell Lung Cancer**

MC17C1: Double-Blinded, Placebo-Controlled Trial to Explore the Anti-Androgen, Ketoconazole, for Treating Patients with an Ongoing EGFR Inhibitor Induced Rash

MEL 18-372: Phase 1B/2 Study of PAC-1 and Entrectinib for Patients with **Metastatic Uveal Melanoma**

MK-6482-011: An Open-label, Randomized, Phase 3 Study of MK-6482 in Combination with Lenvatinib (MK-7902) versus Cabozantinib for Second-line or Third-line Treatment in Participants with **Advanced Renal Cell Carcinoma** Who Have Progressed After Prior Anti- PD-1/L1 Therapy

MK-6482-012: An Open-label, Randomized Phase 3 Study to Evaluate Efficacy and Safety of Pembrolizumab (MK-3475) in Combination with Belzutifan (MK-6482) and Lenvatinib (MK-7902), or MK-1308A in Combination with Lenvatinib, versus Pembrolizumab and Lenvatinib, as First-line Treatment in Participants with **Advanced Clear Cell RCC**

MRT516-005: A Randomized Phase 3 Study of Sitravatinib in Combo with Nivolumab versus Docetaxel in Patients with **Advanced NSCLC** with Disease Progression on or after Platinum-Based Chemotherapy in Combo with Checkpoint Inhibitor Therapy

NDS-DLBCL-003: Connect® Lymphoma Disease Registry: A US-Based Prospective Observational Cohort Study

NEKTAR PROPEL 16-214-05: A Phase 1b Open-Label, Multicenter Study to Investigate the Safety and Preliminary Efficacy of NKTR-214 in Combo with Anti-PD1 (Pembro) or Anti-PDL1 (Atezolizumab) in Patients with Locally Advanced or Metastatic Solid Tumors (**NSCLC, Urothelial, Melanoma, HCC, HNSCC**)

NX-001: A Phase 1 Study of GNX102 in patients with Advanced Solid Tumors

PSB205-001: A Phase 1, Open-Label, Dose Escalation and Expansion Study to Evaluate the Safety, Tolerability, Pharmacokinetics, and Preliminary Anti-tumor Activity of PSB205 in Patients with **Relapsed/Refractory Solid Tumors**

RGX110-001: A Phase 1 Study of RGX-104, a Small Molecule LXR Agonist, as a Single Agent and as Combo Therapy in Patients with **Advanced Solid Malignancies and Lymphoma** with an Expansion in Select Malignancies (NSCLC & SCLC)

SPOTLIGHT 8951-CL-0301: A Phase 3, Global, Multi-Center, Double-Blind, Randomized, Efficacy Study of Zolbetuximab (IMAB362) + mFOLFOX6 versus Placebo + mFOLFOX6 as First-line Treatment of Subjects with CLDN 18.2-Positive, HER2-Negative, **Locally Advanced Unresectable or Metastatic Gastric or GEJ Adenocarcinoma**

TAK981-1002: An Open Label, Dose-Escalation, Phase 1/2 Study to Evaluate the Safety, Tolerability, and Pharmacokinetics, of TAK-981 in Adult Patients with **Metastatic Solid Tumors or Lymphomas (Now in Phase 2 only)**

TAK981-1002: An Open Label, Dose-Escalation, Phase 1/2 Study to Evaluate the Safety, Tolerability, and Pharmacokinetics, of TAK-981 in Adult Patients with **Metastatic Solid Tumors or Lymphomas (Now in Phase 2 only)**

TPX-0005-01: A Phase 1/2 Open Label, Multi-Center, First-in-Human Study of the Safety, Tolerability, Pharmacokinetics, and Anti-Tumor Activity of TPX-0005 in Patients with **Advanced Solid Tumors Harboring ALK, ROS1, or NTRK1-3 Rearrangements**

TTX-080-001: A First-in-human, Phase 1 Study to Evaluate the Safety of TTX-080, an HLA-G Antagonist, in Subjects with **Advanced Solid Tumors**

Quality measures

These quality measures indicate the portion of breast, colon, rectum and lung cancer patients treated according to recognized standards of care by diagnosis year. The results are reported to the Rapid Cancer Reporting System (RCRS) of the National Cancer Data Base (NCDB), a joint program of American College of Surgeons (ACoS) and American Cancer Society. NCDB is a nationwide oncology outcomes database for more than 1,500 commission-accredited cancer programs.

NCDB Select Breast Measures

		ESTIMATED PERFORMANCE RATES					
		HEALTHPARTNERS			PARK NICOLLET		
Breast Cancer		2020	2019	2018	2020	2019	2018
Radiation therapy is administered within 1 year (365 days) of diagnosis for women under age 70 receiving breast-conserving surgery for breast cancer.	PR/EPR	95.60%	93.69%	90.32%	96.69%	94.27%	95.39%
	95% CI	[91.30 – 99.81%]	[89.17 – 98.22%]	[85.12 – 95.53%]	[93.83 – 99.54%]	[90.63 – 97.90%]	[92.06 – 98.73%]
	BENCHMARK	90%	90%	90%	90%	90%	90%
Tamoxifen or third generation aromatase inhibitor is recommended or administered within 1 year (365 days) of diagnosis for women with AJCC T1cN0M0, or Stage IB – III hormone receptor-positive breast cancer.	PR/EPR	98.13%	98.32%	92.68%	93.45%	96.47%	95.83%
	95% CI	[95.56 – 100%]	[96.01 – 100%]	[88.08 – 97.29%]	[89.71 – 97.19%]	[93.70 – 99.24%]	[92.57 – 99.10%]
	BENCHMARK	90%	90%	90%	90%	90%	90%
Combination chemotherapy or chemo-immunotherapy (if HER2 positive) is recommended or administered within 4 months (120 days) of diagnosis for women under 70 with AJCC T1cN0M0, or Stage IB – III hormone receptor-negative breast cancer.	PR/EPR	100%	100%	100%	97.67%	100%	100%
	95% CI	[100 – 100%]	[100 – 100%]	[100 – 100%]	[93.17 – 100%]	[100 – 100%]	[100 – 100%]
	BENCHMARK	*	*	*	*	*	*
Radiation therapy is recommended or administered following any mastectomy within 1 year (365 days) of diagnosis of breast cancer for women with ≥ 4 positive regional lymph nodes.	PR/EPR	100%	75.00%	86.67%	100%	88.89%	100%
	95% CI	[100 – 100%]	[44.99 – 100%]	[69.46 – 100%]	[100 – 100%]	[68.36 – 100%]	[100 – 100%]
	BENCHMARK	90%	90%	90%	90%	90%	90%
Image or palpation-guided needle biopsy to the primary site is performed to establish diagnosis of breast cancer.	PR/EPR	98.38%	95.05%	94.72%	97.48%	97.73%	97.37%
	95% CI	[96.81 – 99.95%]	[92.53 – 97.58%]	[92.20 – 97.24%]	[96.08 – 98.89%]	[96.46 – 99%]	[95.96 – 98.78%]
	BENCHMARK	80%	80%	80%	80%	80%	80%

*No benchmark

NCDB Select Colon, Rectum and Lung Measures

Colon Cancer

At least 12 regional lymph nodes are removed and pathologically examined for resected colon cancer.

PR/EPR

95% CI

BENCHMARK

Adjuvant chemotherapy is recommended or administered within 4 months (120 days) of diagnosis for patients under the age of 80 with AJCC Stage III (lymph node positive) colon cancer.

PR/EPR

95% CI

BENCHMARK

ESTIMATED PERFORMANCE RATES

HEALTHPARTNERS			PARK NICOLLET		
2020	2019	2018	2020	2019	2018
97.50%	100%	98.36%	94.92%	92.11%	91.30%
[92.66 – 100%]	[100 – 100%]	[95.17 – 100%]	[89.31 – 100%]	[86.04 – 98.17%]	[84.66 – 97.95%]
85%	85%	85%	85%	85%	85%
100%	100%	84.21%	92.86%	85.71%	100%
[100 – 100%]	[100 – 100%]	[67.81 – 100%]	[79.37 – 100%]	[70.75 – 100%]	[100 – 100%]
*	*	*	*	*	*

Rectum Cancer

Preoperative chemo and radiation are administered for clinical AJCC T3N0, T4N0, or Stage III; or Postoperative chemo and radiation are administered within 180 days of diagnosis for clinical AJCC T1-2N0 with pathologic AJCC T3N0, T4N0, or Stage III; or treatment is recommended; for patients under the age of 80 receiving resection for rectal cancer.

PR/EPR

95% CI

BENCHMARK

HEALTHPARTNERS			PARK NICOLLET		
2020	2019	2018	2020	2019	2018
92.86%	84.62%	84.62%	85.71%	72.73%	72.73%
[79.37 – 100%]	[65 – 100%]	[65 – 100%]	[59.79 – 100%]	[46.41 – 99.05%]	[46.41 – 99.05%]
85%	85%	85%	85%	85%	85%

Lung Cancer

Systemic chemotherapy is administered within 4 months to day preoperatively or day of surgery to 6 months postoperatively, or it is recommended for surgically resected cases with pathologic, lymph node-positive (pN1) and (pN2) NSCLC.

PR/EPR

95% CI

BENCHMARK

Surgery is not the first course of treatment for cN2, M0 lung cases.

PR/EPR

95% CI

BENCHMARK

HEALTHPARTNERS			PARK NICOLLET		
2020	2019	2018	2020	2019	2018
88.89%	100%	83.33%	100%	88.89%	83.33%
[68.36 – 100%]	[100 – 100%]	[53.51 – 100%]	[100 – 100%]	[68.36 – 100%]	[53.51 – 100%]
85%	85%	85%	85%	85%	85%
85.71%	62.50%	93.75%	92.86%	100%	100%
[59.79 – 100%]	[28.95 – 96.05%]	[81.89 – 100%]	[79.37 – 100%]	[100 – 100%]	[100 – 100%]
85%	85%	85%	85%	85%	85%

*No benchmark

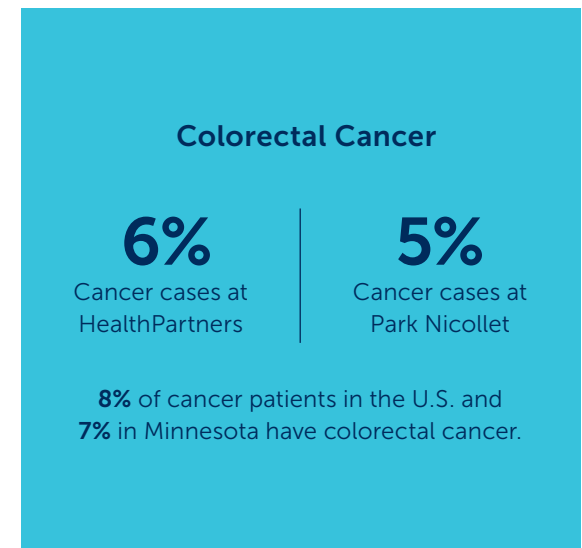
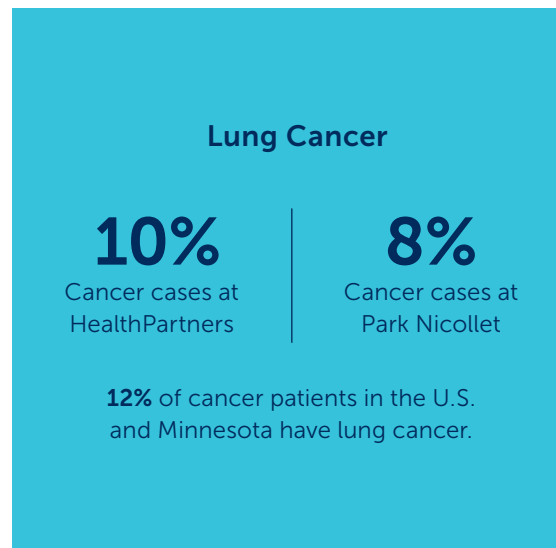
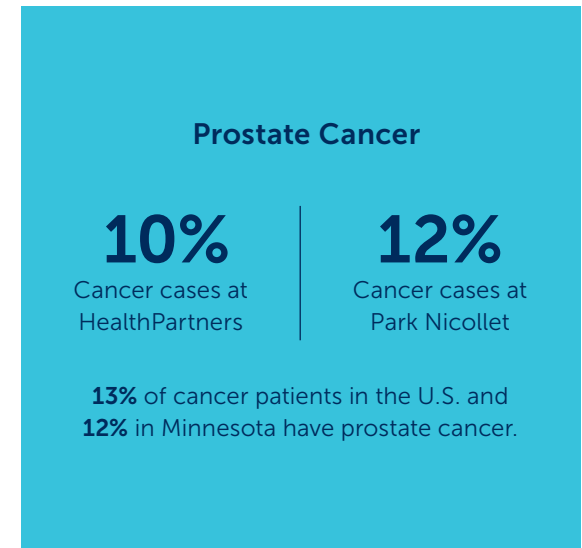
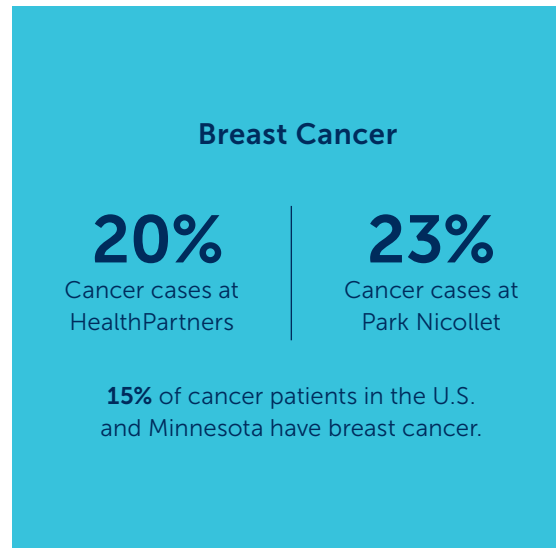
Oncology registry

Most common cancer sites

The four most common cancers for HealthPartners and Park Nicollet patients in 2020 (excluding skin cancers) were breast, prostate, lung and colorectal. These four sites account for 56 percent of all cases.

**TABLE 1:
2020 Four Most Common Cancer Sites**

Table 1 compares, by site and percentage, HealthPartners and Park Nicollet case totals with estimated number of cancer cases in Minnesota and the U.S.



**TABLE 2:
2020 Tumor Registry**

HealthPartners and Park Nicollet tumor registries contain a comprehensive profile of all newly diagnosed cancer using standards set by the American College of Surgeons.

	HEALTH PARTNERS		PARK NICOLLET	
	2019	2020	2019	2020
ANALYTIC CASES (includes physician office cases)*	2,638	2378	2915	2661
NON-ANALYTIC CASES**	74	31	0	0
PERCENTAGE OF CASES PRESENTED AT TUMOR CONFERENCES (GENERAL, GYN, BREAST, LUNG)	24% (636)	25% (598)	21.7% (634)	35.6% (949)

*Analytic: cases diagnosed and/or having initial therapy at HealthPartners or Park Nicollet

**Non-analytic: cases having all initial therapy elsewhere, seen at HealthPartners or Park Nicollet for further care and treatment

**TABLE 3:
2020 Leading Sites of Cancer Incidence**

CANCER TYPE – MALES	HEALTHPARTNERS		PARK NICOLLET	
	MALE (n=999)	%	MALE (n=1,191)	%
PROSTATE GLAND (includes non-analytic)	242	24	322	27
SKIN (includes non-analytic)	103	10	201	17
BRONCHUS & LUNG	94	9	103	9
BLOOD & BONE MARROW	66	7	88	7
URINARY BLADDER	47	5	68	6
COLON & RECTUM	81	8	76	6
KIDNEY	37	4	35	3
LYMPH NODES	53	5	55	5
PANCREAS	38	4	25	2
ESOPHAGUS	14	1	19	2

CANCER TYPE – FEMALES	HEALTHPARTNERS		PARK NICOLLET	
	FEMALE (n=1,379)	%	FEMALE (n=1,470)	%
BREAST	481	35	605	41
SKIN (includes non-analytic)	126	9	147	10
BRONCHUS & LUNG	125	9	108	7
CORPUS UTERI	80	6	82	6
COLON & RECTUM	71	5	64	4
BLOOD & BONE MARROW	72	5	63	4
LYMPH NODES	44	3	52	4
THYROID GLAND	34	2	30	2
PANCREAS	37	3	38	3
OVARY	18	1	30	2
KIDNEY	39	3	25	2
URINARY BLADDER	26	2	25	2

Cancer committee members 2021

Our cancer committees meet quarterly to review all aspects of our program. This includes information related to cancer conferences, community outreach, research and quality improvement, as well as all the teams involved in cancer care.

HealthPartners

Daniel Anderson, MD, MPH
Medical Oncology

Kathryn Baxstrom, MD
Medical Oncology

Sue Braaten, RHIT, CTR
Oncology Registry

E. J. Buckley, MD
Breast Surgeon

Linda Christinsen-Rengel, NP
Breast Health Center

Christine Colbach, MD
Pathology

Kevin Collis, RN, OCN
Nurse Navigator

Kim Duffy, RD
Food and Nutritional Services

Holly Guida, RN-BSN, MBA
Oncology Program Manager

Kristin Hanrahan
Quality Improvement

Laura Holasek
Director, Oncology

Randy Hurley, MD
Medical Oncology

Cindy Johnston, MS, LGC
Genetic Counselor

Michele Lacy, RN, BSN, OCN
Director, Research

Pam Mason, MS
American Cancer Society

Gretchen Niemioja, MD
Rehabilitation Services

Trisha Prescott, MD
Radiology

James Risser, MD
Internal Medicine, Palliative Care

Rob Ruff
Pastoral Care

Miguel Ruiz Diaz, MD
Hospice Medical Director

James Schlaefer, MD
General Surgery, Surgical Oncology
(Cancer Liaison Physician,
American College of Surgeons)

Denise Shannon
Lead Oncology Social Worker

Charles Shideman, MD
Radiation, Oncology

Jane Siekkinen, BS, CTR
Oncology Registry Manager

Lashonda Soma, MD
Radiology

Bonnie Sweeney, RN
Nursing

Beth Werner, RN, MHA
Home Care, Hospice
and Palliative Medicine

Park Nicollet

Kathryn Baxstrom, MD
Medical Oncology

Michael Blazar, MD
Hospital Service, Liaison Physician

Christopher Chow, MD
Colon and Rectal Surgery

Levi Downs, MD
Gynecology Oncology

Kelly Furda, MD
Radiologist, Jane Brattain Breast Center

Sandra Nevinski, BSN, RN
Home Care, Hospice
and Palliative Medicine

Howard Haines, MD
Emergency Medicine

Michael Haley, DO
Radiation Oncology

Kristin Hanrahan
Quality Improvement

Megan Hanson, MS, CGC
Genetics

Keith Heaton, MD
General Surgery, Surgical Oncology
(Cancer Liaison Physician,
American College of Surgeons)

Joanna Hill, MBA, CCRP
Research Manager

Laura Holasek
Director, Oncology

Anne Hopkins, RN, OCN
Oncology Program Manager

Lisa Illig, MD
Home Care, Hospice
and Palliative Medicine

Sara Jax, NP
Survivorship Program

Pamela Mason, MS
American Cancer Society

Matt McCoy, MD
Pathology

Angela Nelson
Radiology

Vicki Norton, BSN, OCN, RN
Nursing

Carol Ann Petersen, LICSW, MAHS
Patient Support and Education

Jocelyn Rieder, MD
Urology

Emily Schoh, RN
Nursing

Bryan Schuler, PharmD, BCOP
Pharmacy

Jane Siekkinen, BS, CTR
Oncology Registry Manager

Paul Spilde, PT
Rehabilitation Services

Janet Stark, BCC
Chaplain

Eric Weinberg, MD
Diagnostic Radiology

Mark Wilkowske, MD
Medical Oncology

Alexandra Zimmerman, RD
Food and Nutrition Services

Oncology clinician team

Lindsay Albert, NP-AGPC
Gilberto Almanza, NP-A
Daniel Anderson, MD, MPH
Annie Barlow, MPAS, PA-C
Claudia Bauman, MD
Kathryn Baxstrom, MD
Turang Behbahani, MD
Kacy Berquist, MSN, APRN, NP-C
Michael Blazer, MD
Joel Carter, MD
Cathleen Chen, MD
Kurt Demel, MD
Christine Ding, MD
Levi Downs, MD
Dave Drone, PharmD
Arkadiusz Dudek, MD, PhD
Kaitlin Durkin, DNP-AGAC
Mary Ehresman, FNP, ADCN
Kristen Engstrom, NP-AGPC
Kelsa Evans, PA-C
Brad Farrell, PharmD
Lori Fewer, CFNP
Chitra Ganesan, MBBS
Warren Goodman, MD
Michael Haley, DO

Robert Haselow, MD
Keith Heaton, MD
Jason Hoiness, PharmD
Anna Hughes, PA-C
Peter Hurley, MD
Randy Hurley, MD
Lisa Huset, PA-C
Lisa Illig, MD
Annie Jacobsen, MD
Jeffrry Jaffe, MD
Balkrishna Jahagirdar, MBBS
Sarah Jax, NP-AGPC
Kathryn Jelle, PA-C
Yan Ji, MD
Khalid Ali Kambal, MB BCh
Elana Knack, MD
Bhaskar Kolla, MD
Kendra Kubiak, MD
Priya Kumar, MD
Brenda Larson, MD
Rachel Lerner, MD
Adrienne Mallen, MD
Sarah Manuels, MPAS, PA-C, MPH
Steven McCormack, MD
Mark Menge, MD

Craig Mescher, MD
Kathryn Moore, MD
Sally Mullany, MD
Gretchen Niemioja, MD
Richard Peterson, MD
Karen Rabenau, MD
Brian Rank, MD
Anne Reiber, ANP, GNP
Jim Risser, MD
James Schlaefer, MD
Daniel Schneider, MD
Melissa Sherman, MD
Charles Shideman, MD
Amy Spomer, MD
Cierra Sroda, PA-C
Somu Suppiah, MD
Deanna Teoh, MD
Kandice Tolic, NP-WH
Jayanthi Vijayakumar, MBBS, MS
Punit Wadhwa, MBBS
Kimberly Walsh, APRN, CNP
Mark Wilkowske, MD
Kelly Young, DNP-F
Dylan Zylla, MD, MS

Patient satisfaction

Our patients are highly satisfied with our care, according to the National Research Corporation.

94%

of our patients highly rate our providers

93%

of patients would highly recommend our facility to family and friends

92%

of patients said they trust their clinician with their care

Leadership in professional organizations

Minnesota Society of Clinical Oncology

We provide leadership and support to the Minnesota Society of Clinical Oncology. This group works to provide advocacy for patients with cancer and promote standards of excellence for high-quality cancer care.

Secretary/Treasurer: **Peter Hurley, MD**

Chair, Education Programs:
Balkrishna Jahagirdar, MD

Member-at-Large: **Yan Ji, MD**

Member-at-Large: **Rachel Lerner, MD**

Membership Liaison: **Sarah Jax, APRN, AOCNP**

Alliance for Clinical Trials in Oncology

This group develops and conducts clinical trials, as well as researches methods to alleviate side effects of cancer and cancer treatments.

Executive Committee Member, Principal Investigator, Board Member and Co-Chair, Community Oncology Committee, Trustee of Alliance Foundation: **Daniel Anderson, MD, MPH**

Member and Co-Chair, Experimental Therapeutics Committee and four national trials:
Balkrishna Jahagirdar, MD

Neuro-Oncology Committee:
Richard Peterson, MD

Respiratory Committee: **Arkadiusz Dudek, MD**

Respiratory Committee, Community Oncology Committee: **Yan Ji, MD**

American Society of Clinical Oncology

This group is dedicated to conquering cancer through research, education and promotion of the highest quality patient care.

Track leader for 2021 Annual Meeting, Grassroots Advocacy Group: **Kurt Demel, MD**

Other leadership roles

Chinese American Hematologist and Oncologists Network

Bridging cancer care, education and research between China and the United States.

Lifetime Member: **Yan Ji, MD**

Cancer Legal Care

This nonprofit engages the law to resolve complex challenges facing people and communities affected by cancer.

Board Member: **Amy Spomer, MD**

A Breath of Hope (ABOH) Lung Foundation

ABOH fights lung cancer by funding innovative United States lung cancer research, raising awareness and supporting patients with lung cancer and their families.

Board Member: **Yan Ji, MD**

Hoosier Cancer Research Network

An independent, nonprofit contract research organization (CRO) that specializes in early phase, multi-center, investigator-initiated oncology clinical trials.

Thoracic Working Group, Genitourinary Cancer Working Group, Skin Cancer Working Group:
Arkadiusz Dudek, MD, PhD

Midwest Melanoma Partnership

This multi-institutional collaboration is dedicated to the development of improved therapies for patients with malignant melanoma.

Chair, Board of Directors:
Arkadiusz Dudek, MD, PhD

National Cancer Institute's Community Oncology Research

This organization is the nation's leader in cancer research.

GI Cancer Steering Committee:
Arkadiusz Dudek, MD, PhD

Regions Hospital Foundation

We work in partnership with our members, patients and community to improve health and well-being.

Board Member and Chair, Cancer Subcommittee:
Balkrishna Jahagirdar, MD

Give hope. Give possibility.

In 2021, through Regions Hospital Foundation and Park Nicollet Foundation, 981 donors gave more than \$1,200,000 to support meaningful care for those affected by cancer at Regions Hospital Cancer Care Center and Park Nicollet Frauenshuh Cancer Center.

Your generous gifts support:

- Basic needs assistance
- Care navigation assistance
- Classes and support groups
- Clinical cancer research
- Integrative therapies including music and massage therapy
- Non-moving patient care model
- Survivorship programming



Be a part of our mission in action

Donate at parknicollet.com/give or contact us at foundation@parknicollet.com.



Make a difference today

Donate at regionshospital.com/donate or contact us at rhf@healthpartners.com.



"Frauenshuh Cancer Center is part of a wonderful organization that's had a real impact on us. We feel a connection and wanted to give to an organization that's going to invest, spend it wisely and show results."

**Jim and Bonnie Prokopanko,
patient and donors**



"The compassion and knowledge we received during Dad's care was unmarked. That's why we gave back to Regions, so they can continue that care."

**Samantha Ziegler (orange jacket),
daughter and donor, along with
Daniel Anderson, MD, and Julie Deeg, RN**



PARK NICOLLET FRAUENSHUH CANCER CENTER
REGIONS HOSPITAL CANCER CARE CENTER
PARK NICOLLET CLINIC & SPECIALTY CENTER – BURNSVILLE
PARK NICOLLET CLINIC & SPECIALTY CENTER – MAPLE GROVE
HUTCHINSON HEALTH CANCER CENTER
LAKEVIEW HOSPITAL CANCER CARE – STILLWATER

To make an appointment, call **800-359-8085**.

Park Nicollet Frauenshuh Cancer Center
Regions Hospital Cancer Care Center
Park Nicollet Clinic & Specialty Center – Burnsville
Park Nicollet Clinic & Specialty Center – Maple Grove
Hutchinson Health Cancer Center
Lakeview Hospital Cancer Care – Stillwater

For more information or to make a referral, contact Laura Holasek at **laura.holasek@parknicollet.com** or **651-254-4656**.

healthpartners.com/cancer

HealthPartners Institute

Advancing health and well-being through research and education

We are research and education together at HealthPartners. We conduct hundreds of research studies each year to improve lives. We also support clinical learning at HealthPartners through the training of many health professionals. We are a member of the national Cancer Research Network and offer unique and novel therapies through an early phase therapeutics program using the newest investigational drugs available for research. Through clinical trials, we support patients with cancer in our community and contribute to life-changing science around the globe.

For more information, visit **healthpartners.com/institute**.